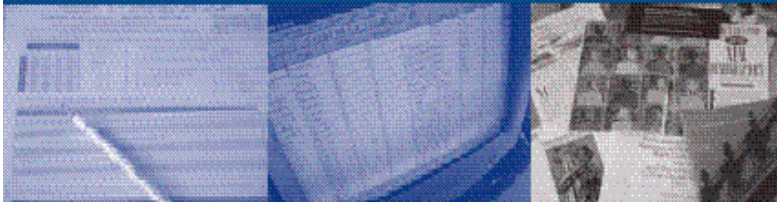


Improving educational policy and practice through research

eipi

Educational Policy Institute



*Improving educational policy
& practice through research*

www.educationalpolicy.org

Ten Critical Factors

**National College Access Network
Annual Conference
Cleveland, OH**

September 24, 2002

Watson Scott Swail, Ed.D., President
Educational Policy Institute, Inc.
wswail@educationalpolicy.org

www.educationalpolicy.org

- Access to Early Childhood Programming
- College Preparatory Course Selection
- Achievement in High School Academic Course Work
- Access to Well-Qualified Teachers
- College Admissions Testing
- High School Graduation
- Applying to College
- College Enrollment
- Financial Aid
- College Persistence and Completion

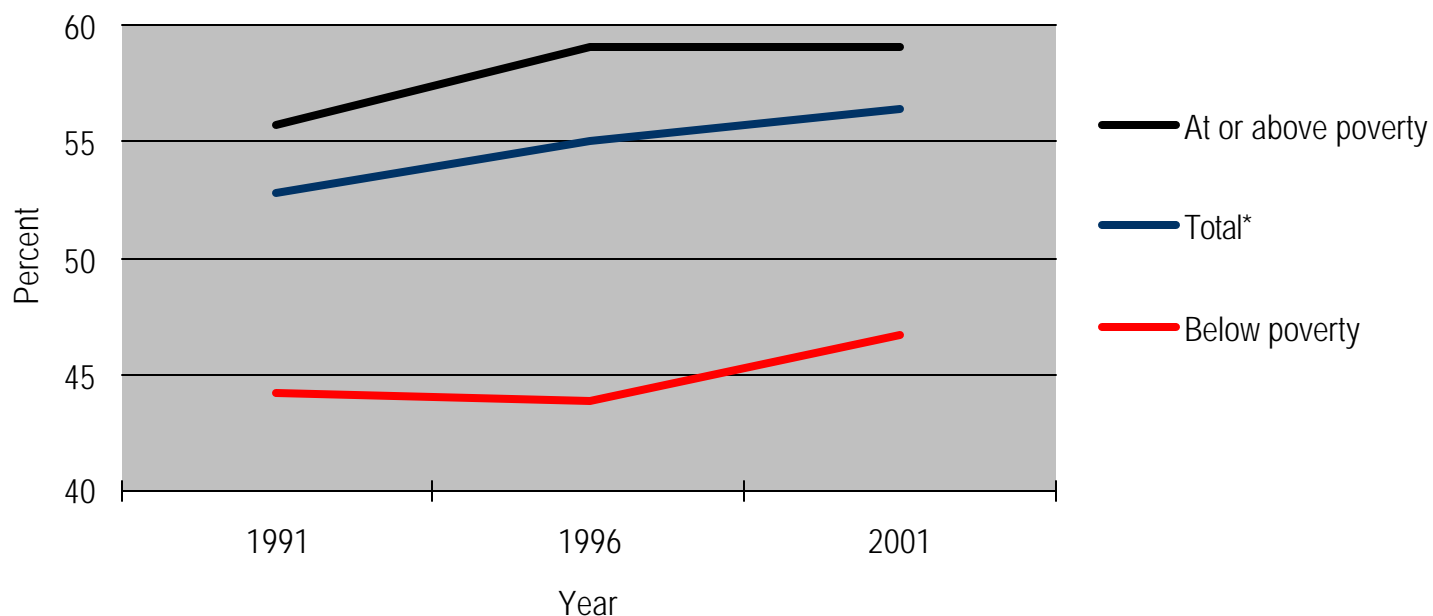


Access to Early Childhood Programming

1

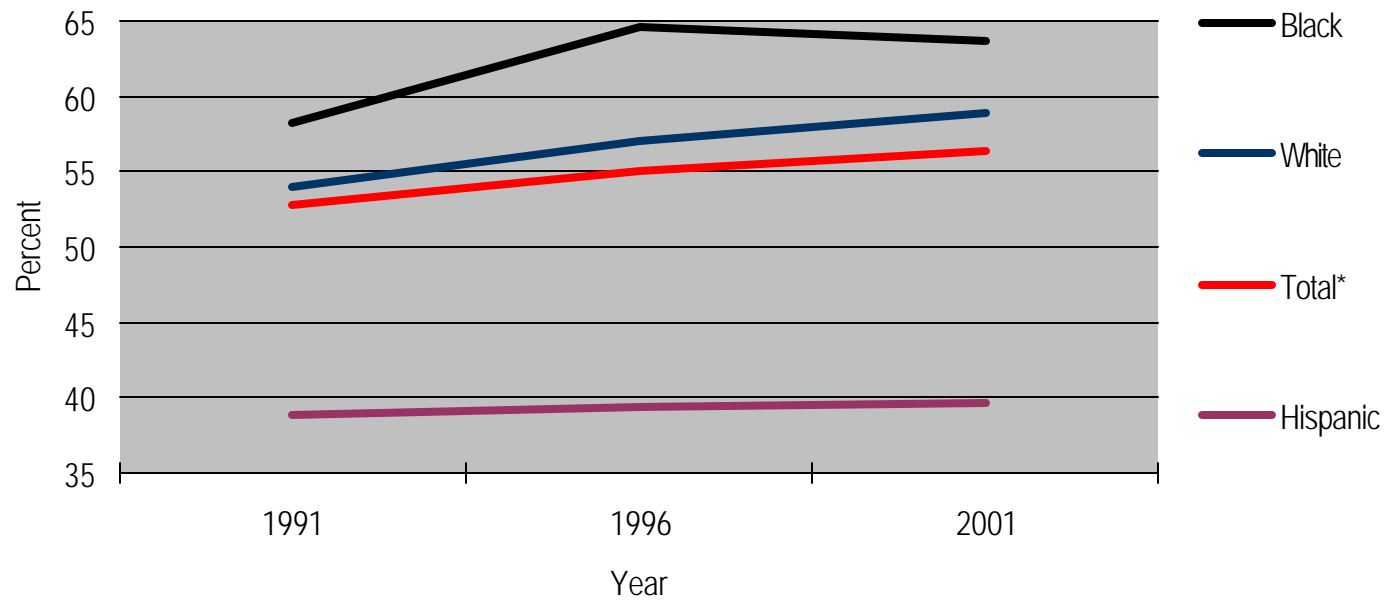
epi

Percentage of 3-5 year olds enrolled in center-based early childhood care and education programs, 1991-2001, by poverty level



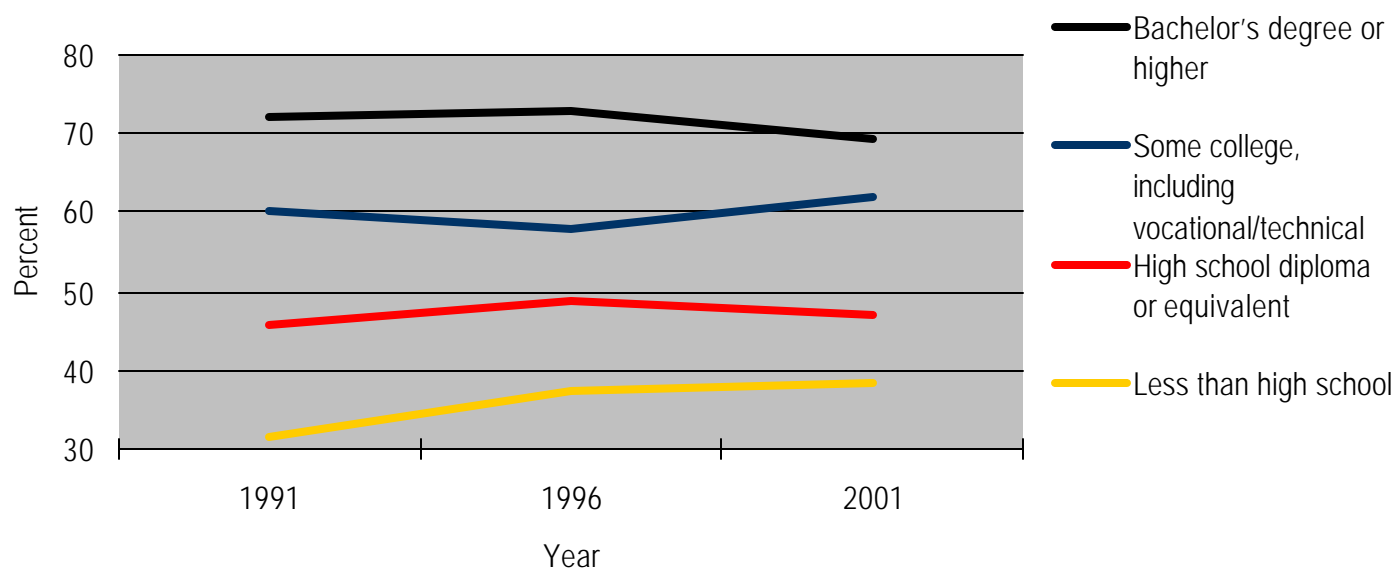
SOURCE: Condition of Education 2002, Table 1-1.

Percentage of 3-5 year olds enrolled in center-based early childhood care and education programs, 1991-2001, by Race/Ethnicity



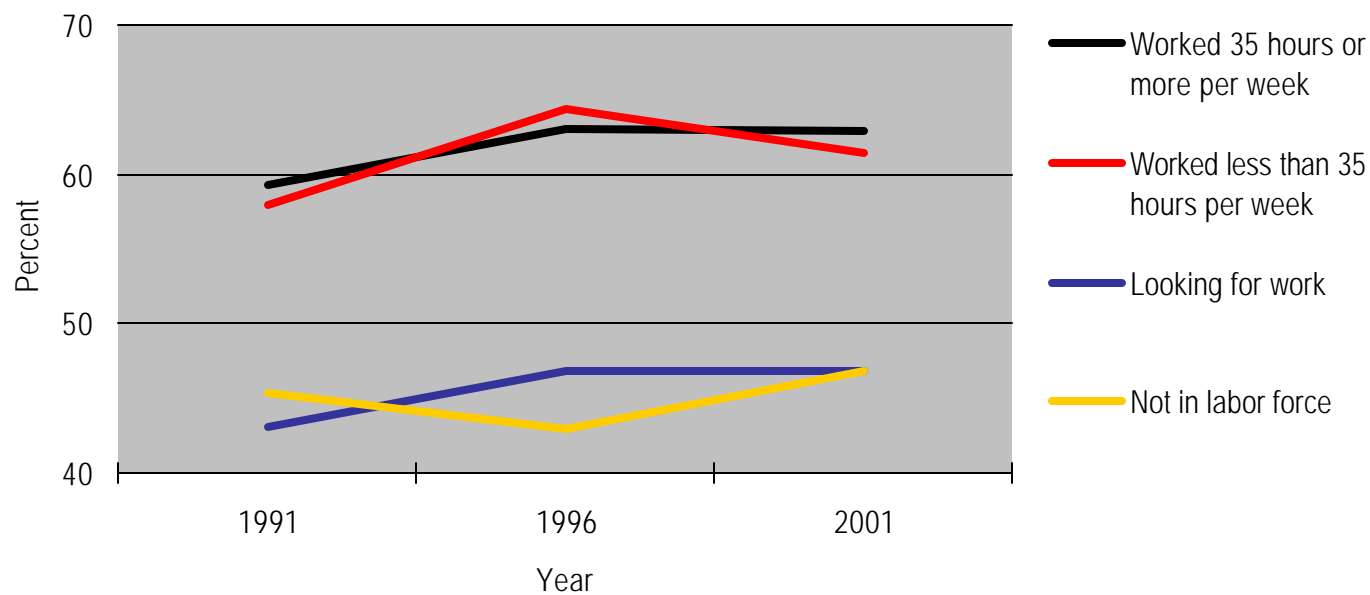
SOURCE: Condition of Education 2002, Table 1-1.

Percentage of 3-5 year olds enrolled in center-based early childhood care and education programs, 1991-2001, by mother's highest level of education



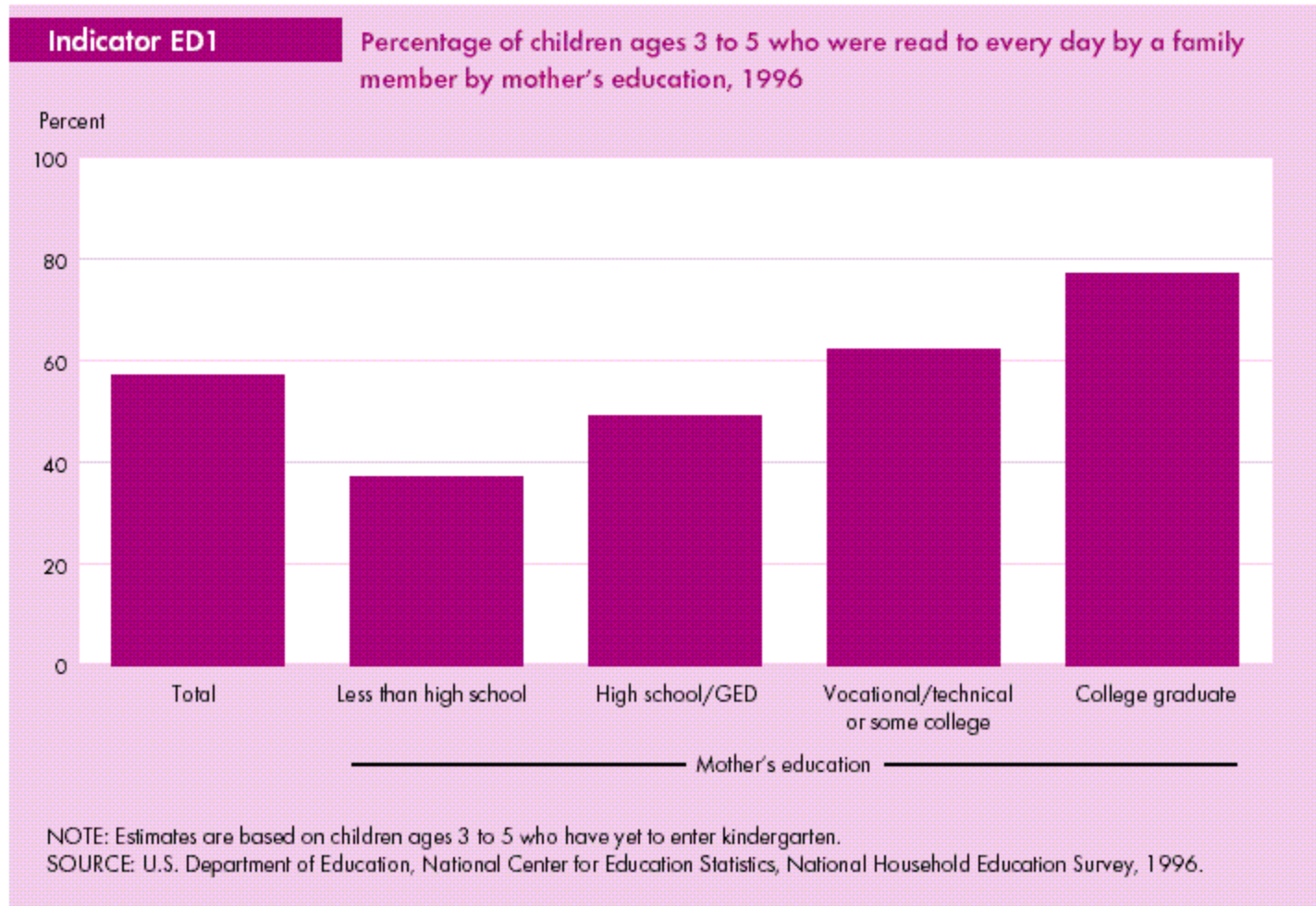
SOURCE: *Condition of Education 2002, Table 1-1.*

Percentage of 3-5 year olds enrolled in center-based early childhood care and education programs, 1991-2001, by mother's employment status



SOURCE: Condition of Education 2002, Table 1-1.

Improving educational policy and practice through research



epi

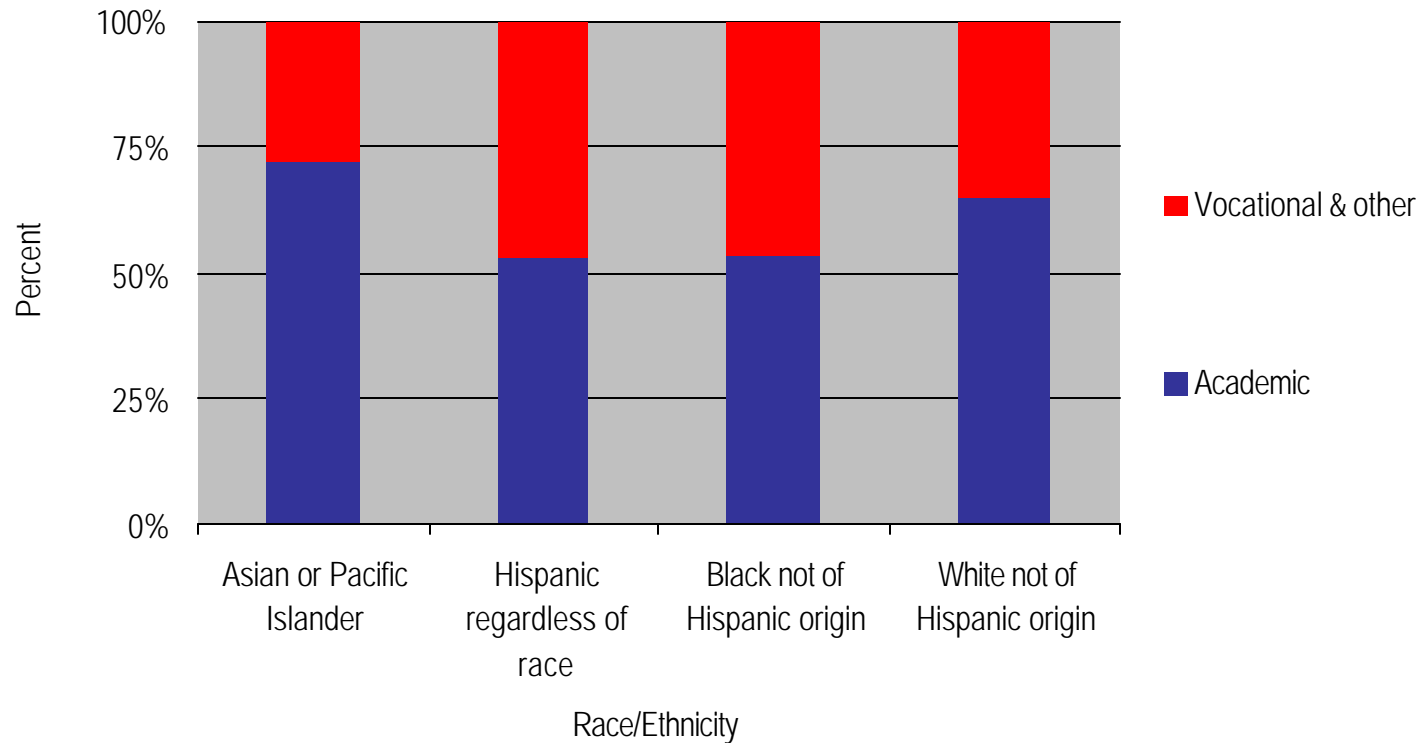
SOURCE: *America's Children: Indicators of Well Being, 1999.*

College Preparatory Course Selection

2

epi

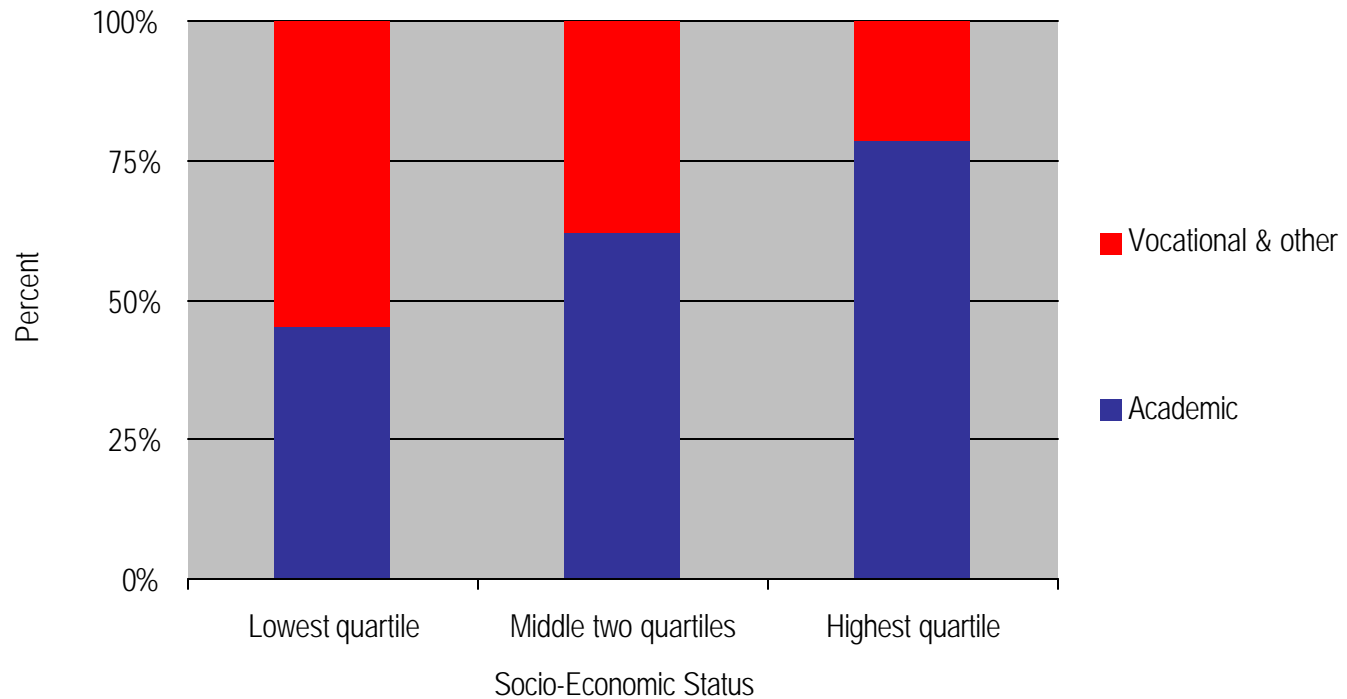
Percentage of 1998 eighth graders reporting in 1992 their type of high school program, by race/ethnicity



SOURCE: NCES, NELS:88/94 Descriptive Summary Report, March 1996. NCES 96-175



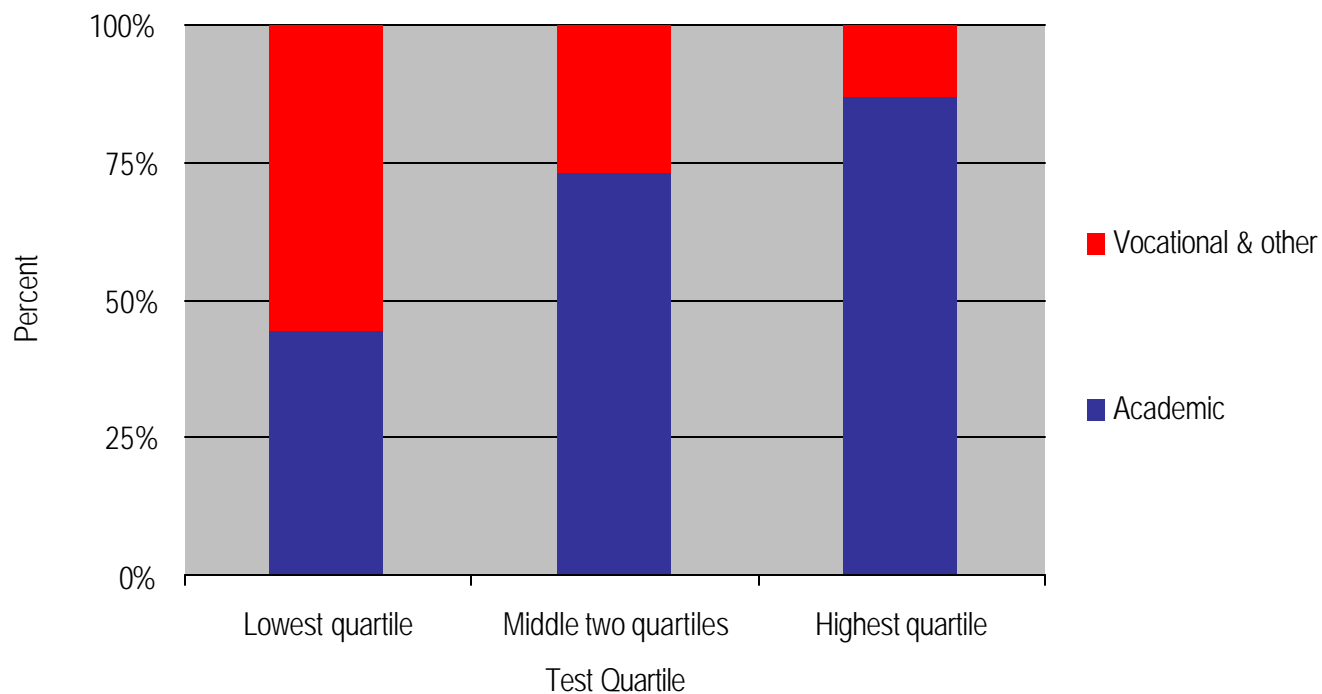
Percentage of 1998 eighth graders reporting in 1992 their type of high school program, by socioeconomic status (1992)



SOURCE: NCES, NELS:88/94 Descriptive Summary Report, March 1996. NCES 96-175



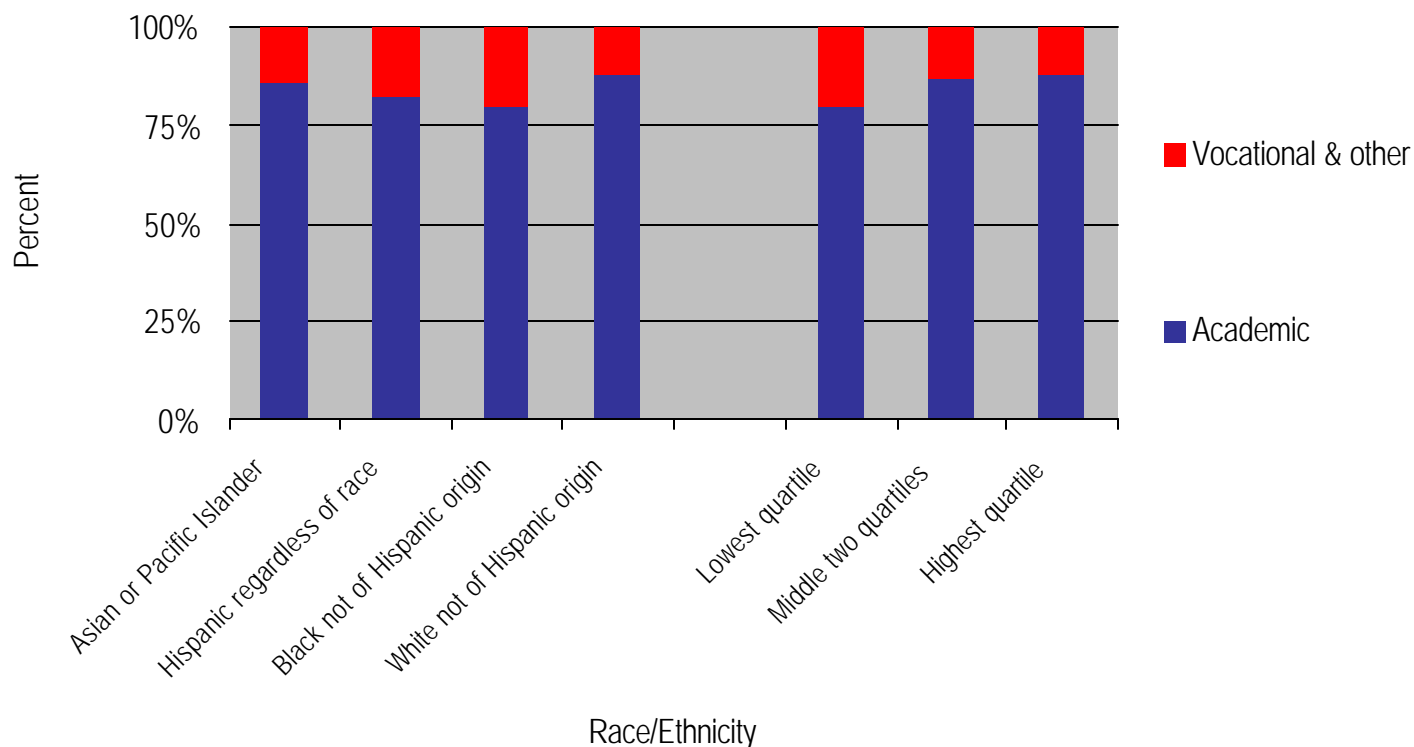
Percentage of 1998 eighth graders reporting in 1992 their type of high school program, by test quartile (1992)



SOURCE: NCES, NELS:88/94 Descriptive Summary Report, March 1996. NCES 96-175



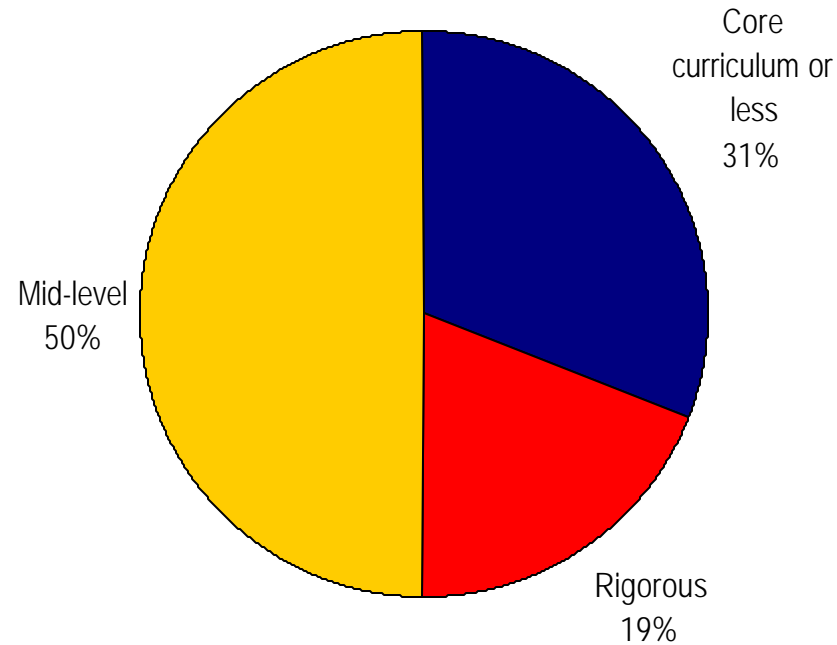
Percentage of 1998 eighth graders in the highest test quartile reporting in 1992 their type of high school program, by race/ethnicity and SES



SOURCE: NCES, NELS:88/94 Descriptive Summary Report, March 1996. NCES 96-175



Percentage distribution of 1995–96 beginning postsecondary students who enrolled in 4-year institutions, by high school academic curriculum

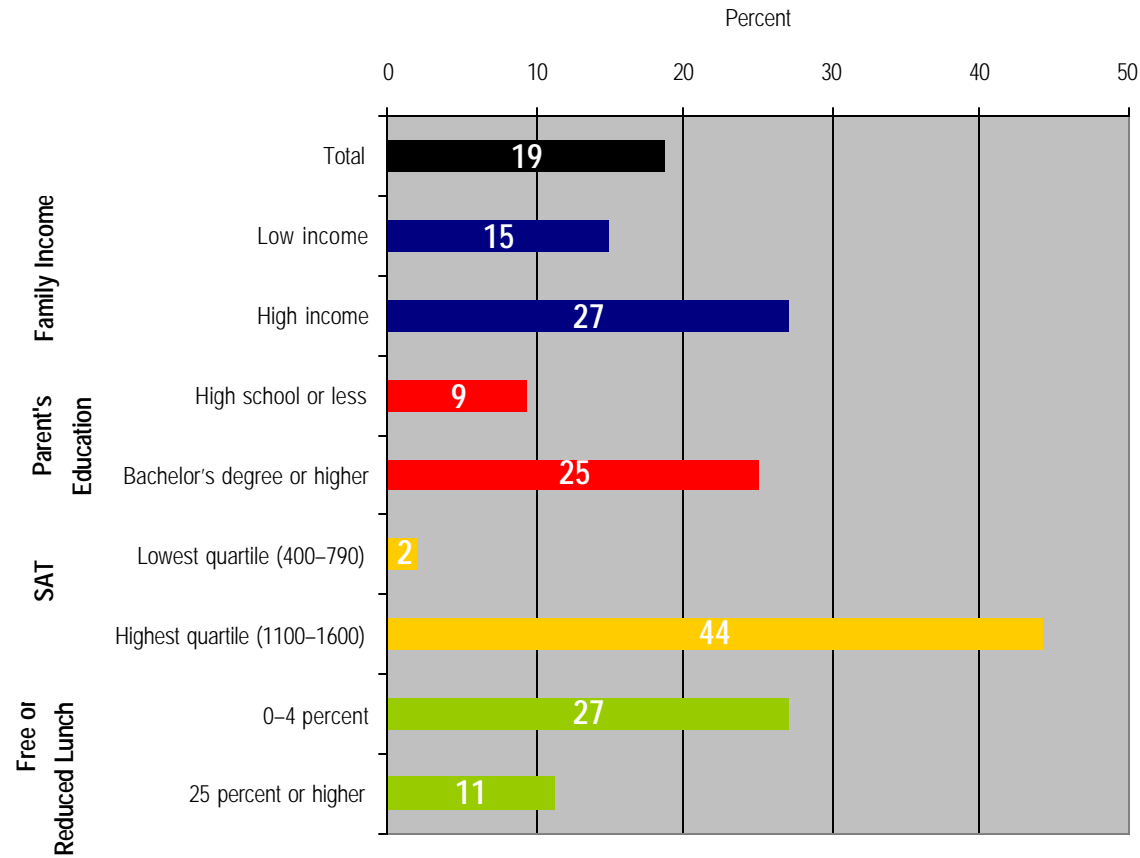


SOURCE: U.S. Department of Education, National Center for Education Statistics, SOURCE: NCES, High School Academic Curriculum and the Persistence Path Through College, NCES-2001-163



Improving educational policy and practice through research

Percentage distribution of 1995–96 beginning students in 4-year institutions, by high school academic curriculum levels and by selected student background and high school characteristics



SOURCE: U.S. Department of Education, National Center for Education Statistics, SOURCE: NCES, High School Academic Curriculum and the Persistence Path Through College, NCES-2001-163



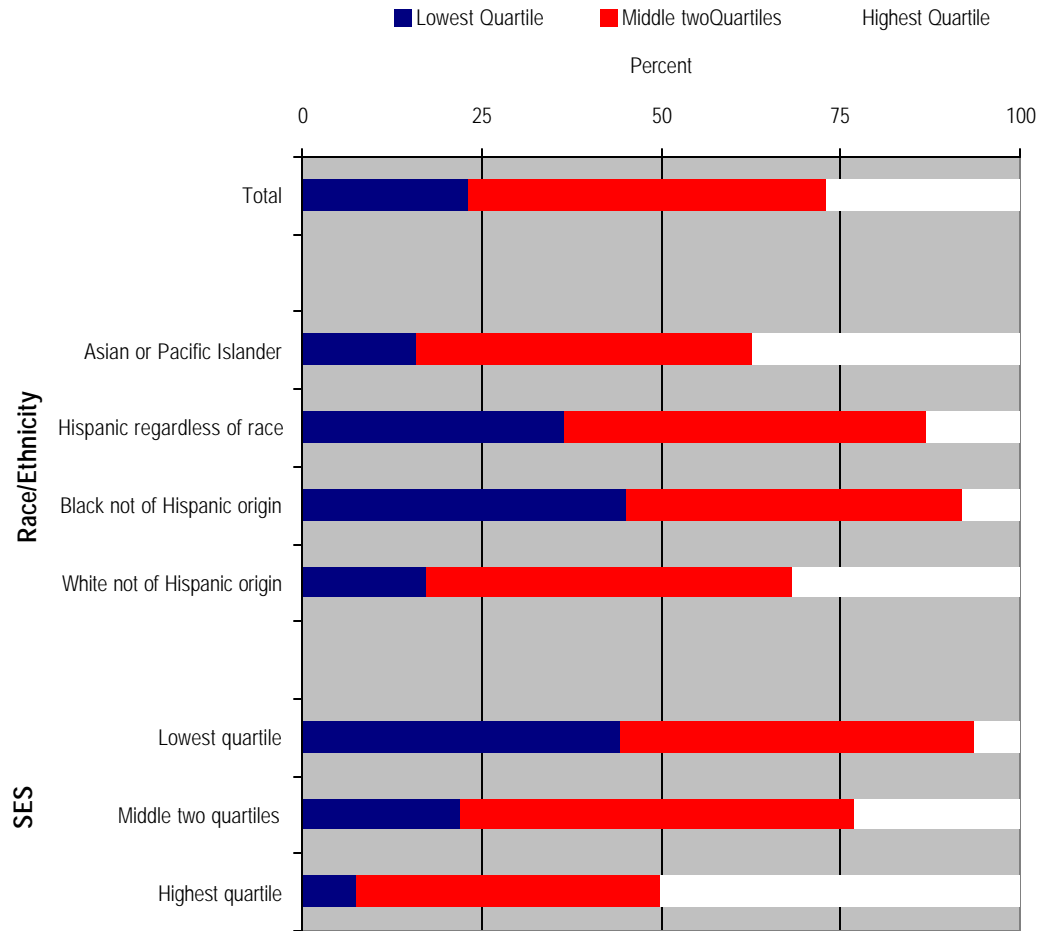
Achievement in High School Academic Course Work

3

epi

Improving educational policy and practice through research

Percentage of 1988 eighth graders in 1992 tested achievement quartile groups, by various characteristics



Source: NCES, National Education Longitudinal Study: 1988-94



Access to Well-Qualified Teachers

4

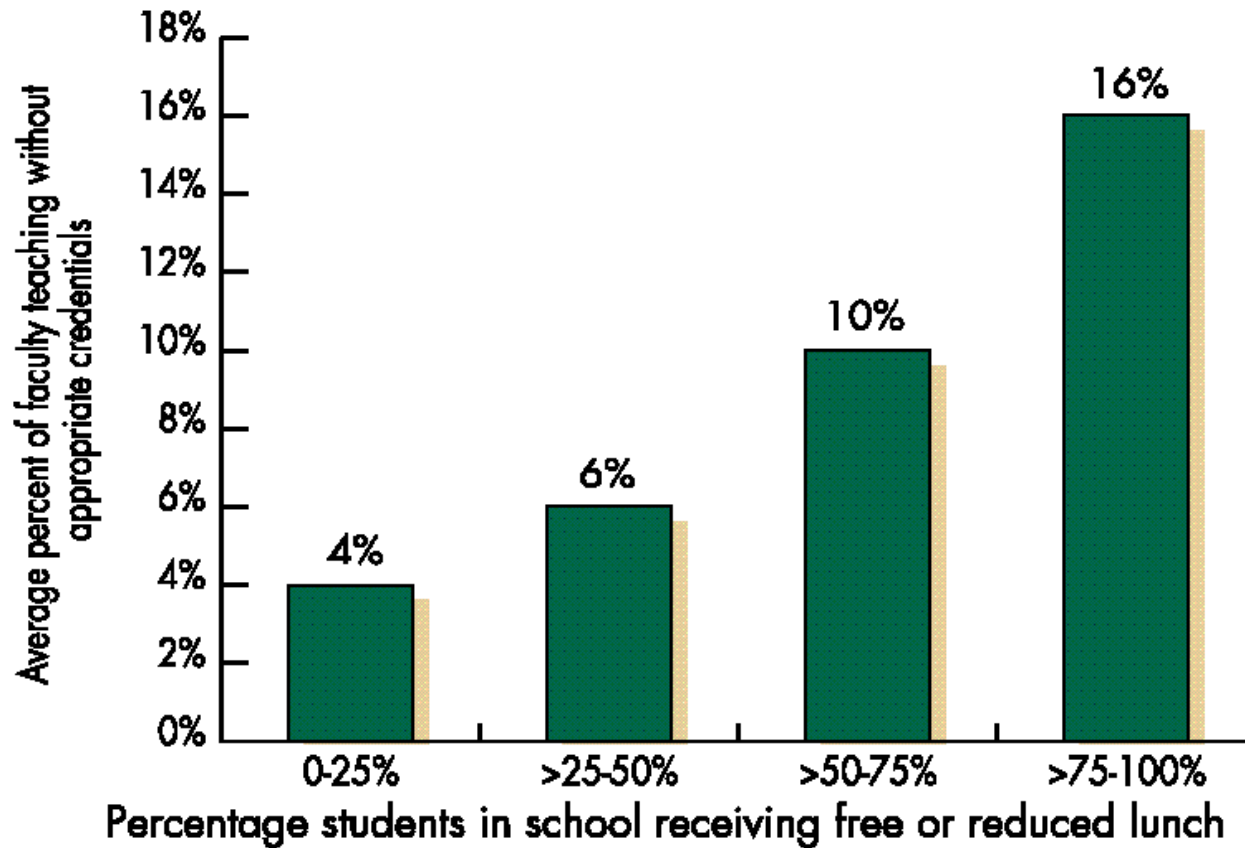
epi

Percentage distributions of full-time public school teachers who held various degrees, by teacher and school characteristics: 1999–2000		
	Public	
	Bachelor's degree	Master's degree or higher
Total	52.6	46.7
Percent of minority students		
Less than 10	50	49.5
10–24	52.2	47.2
25–49	54.7	44.5
50–75	56.2	43.2
More than 75	54.9	44.4
Percent of students eligible for free or reduced-price lunch		
Less than 15	46.9	52.3
15–29	53.3	46.3
30–49	56.5	42.7
50–74	57.1	42.4
75–100	55.6	43.8
Percent of students with limited English proficiency		
Less than 1	51.6	47.7
1–10	52.5	47
More than 10	57.1	42.3

SOURCE: U.S. Department of Education, Condition of Education 2002 Table 32-1

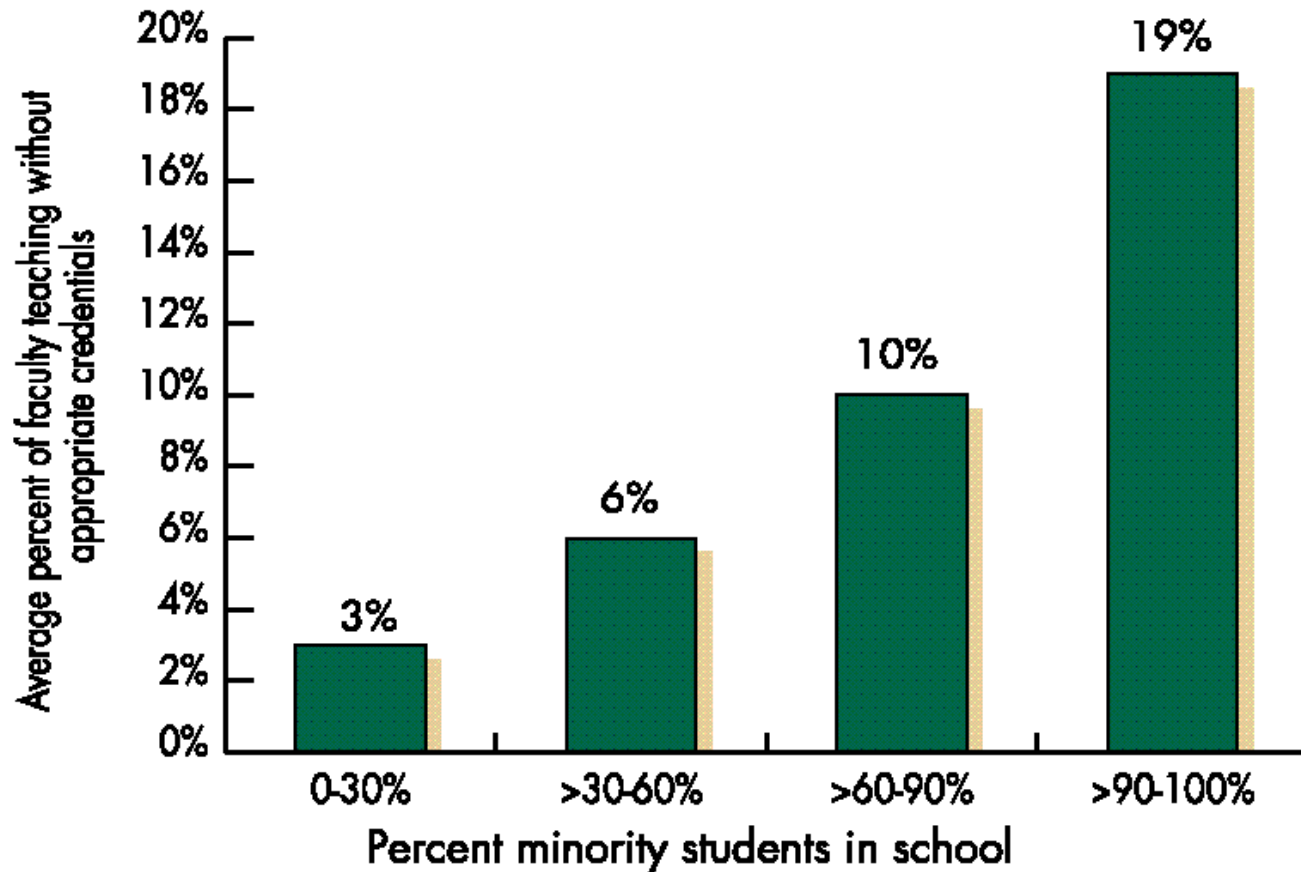


Who Gets Underqualified Teachers?



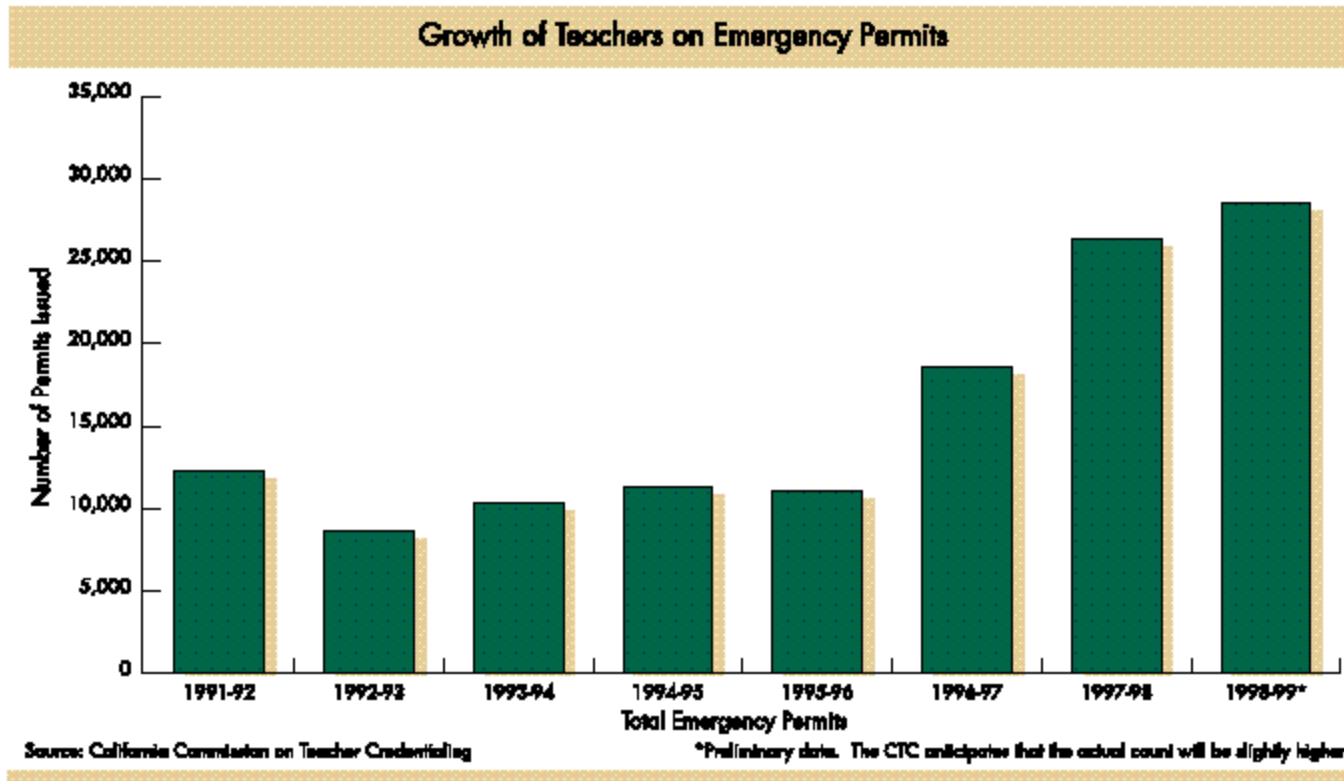
Sources: CBEDS (1999); SRI analysis





Sources: CBEDS (1999); SRI analysis



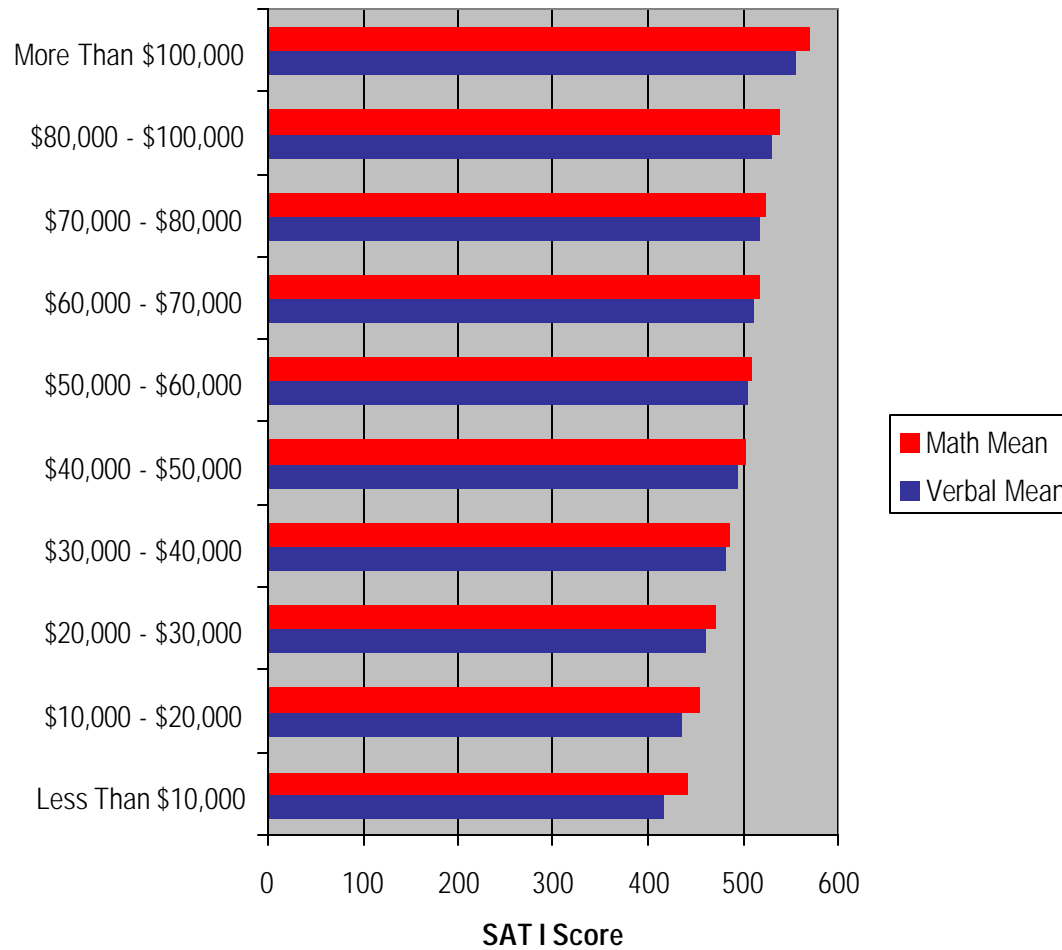


College Admissions Testing

5

epi

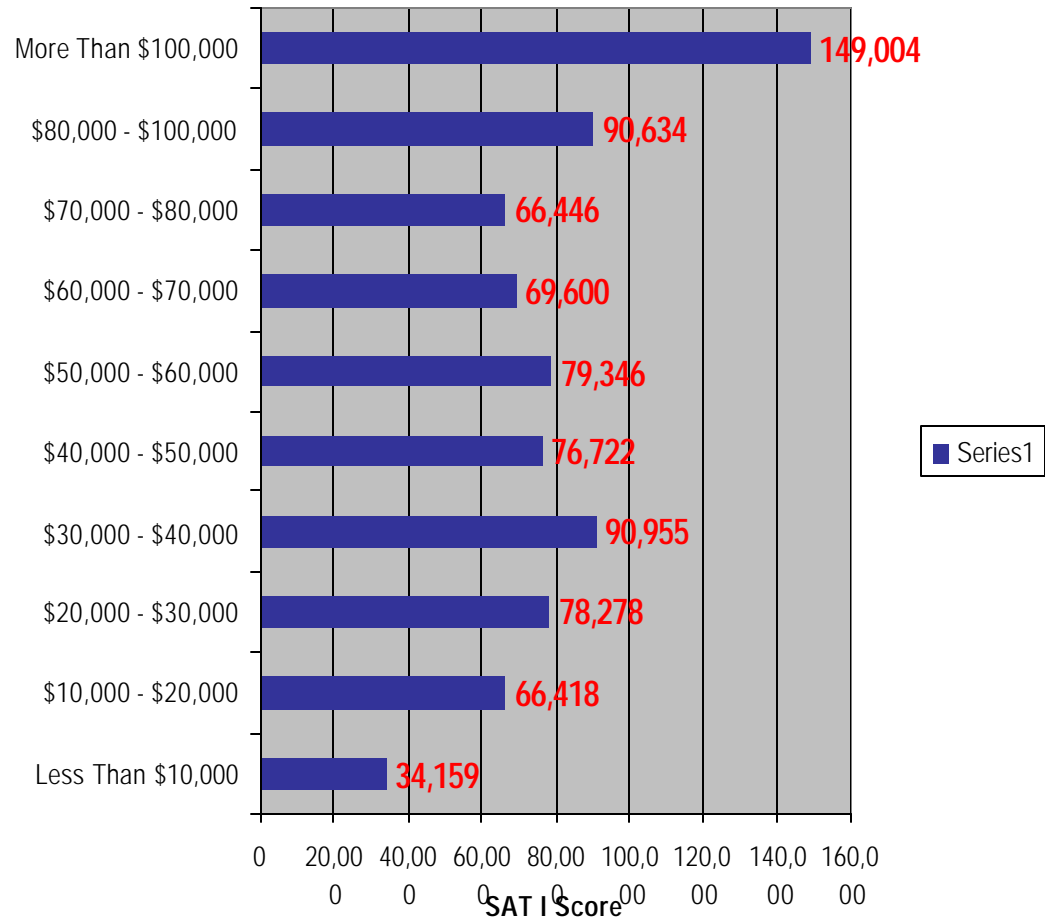
SAT Score Distribution by Income, 2002



SOURCE: College Bound Seniors Report 2002. The College Board.

Improving educational policy and practice through research

Distribution of SAT Test Takers by Income, 2002



SOURCE: Colleae Bound Seniors Report 2002. The Colleae Board.

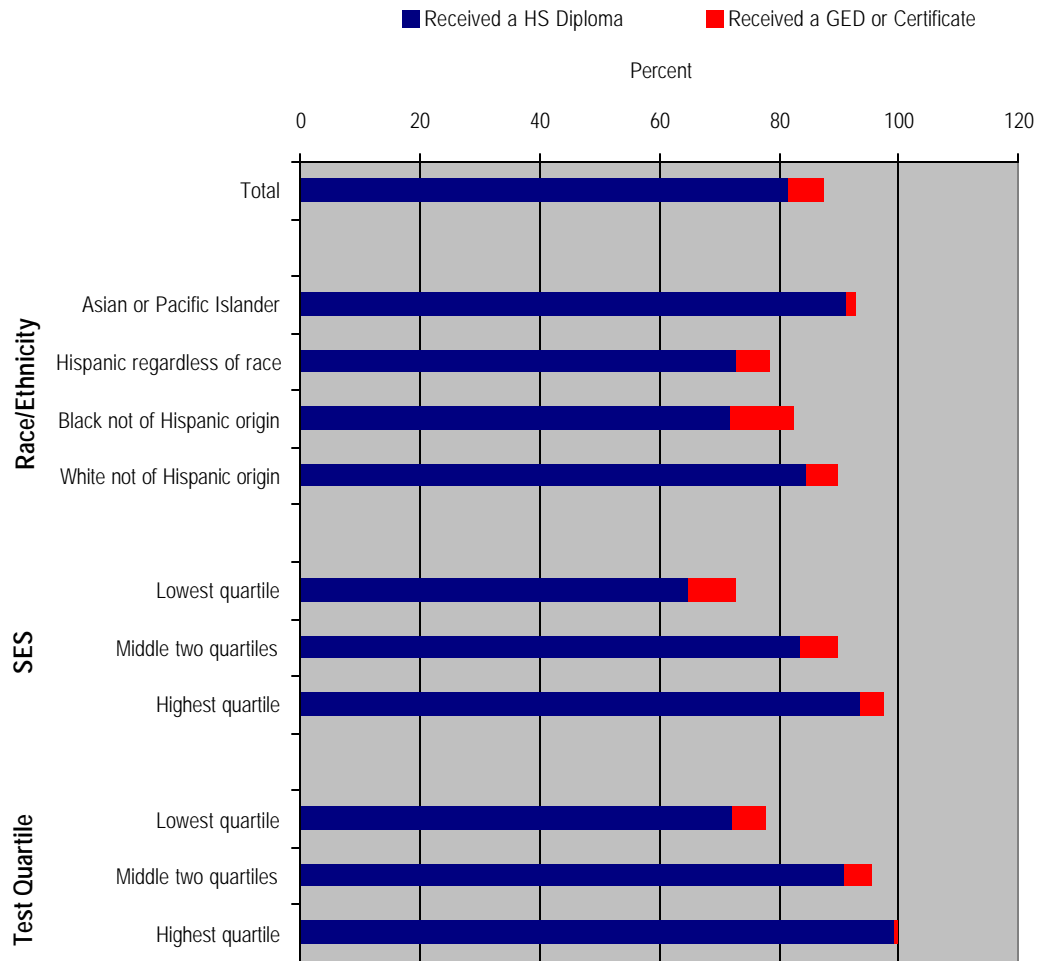
High School Graduation

6

epi

Improving educational policy and practice through research

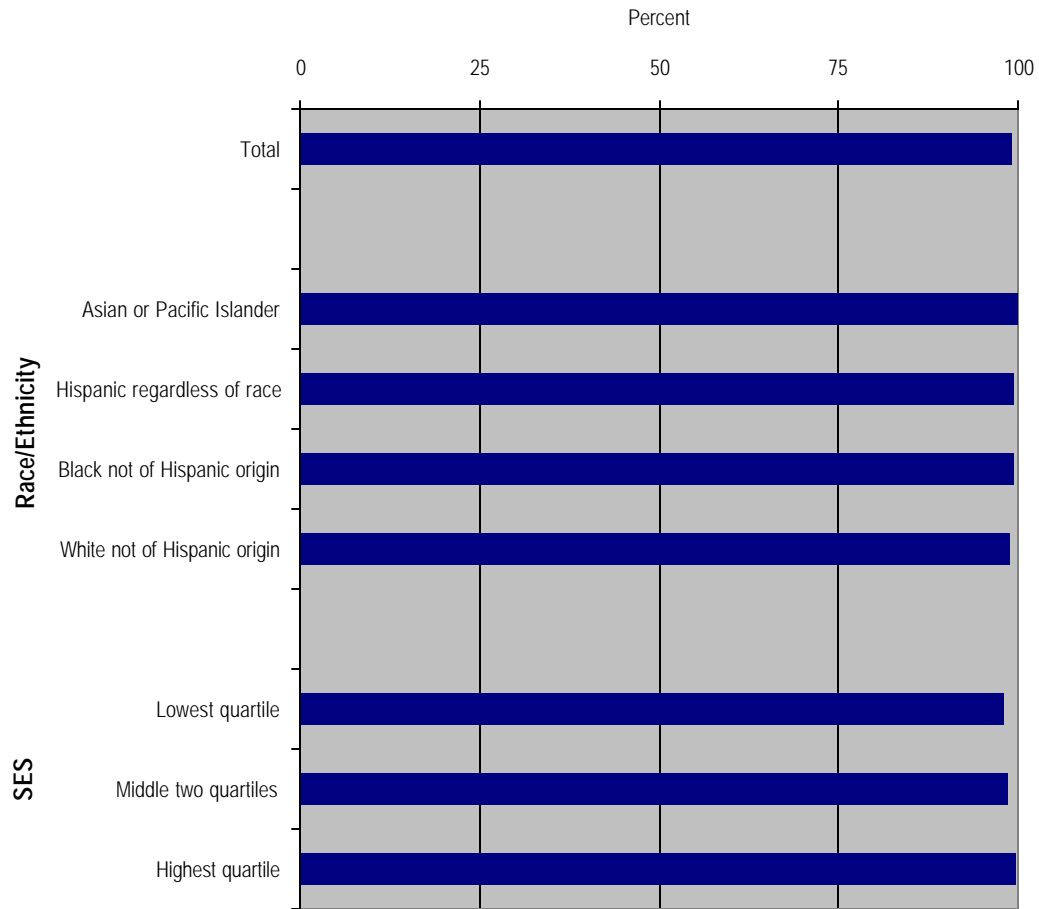
Percentage of 1988 eighth graders in 1994 high school diploma status groups, by various characteristics



Source: NCES, National Education Longitudinal Study: 1988-94

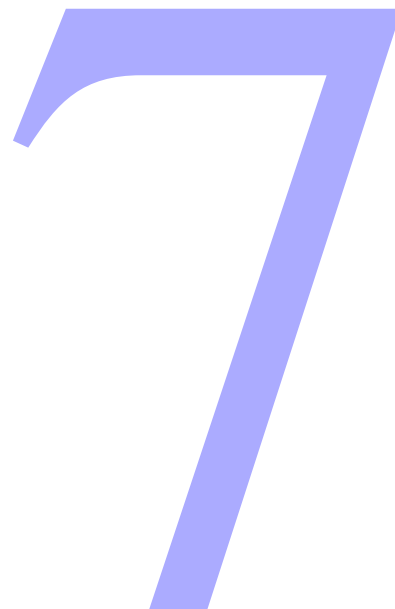
Improving educational policy and practice through research

Percentage of 1988 eighth graders in the highest test quartile in 1994 high school diploma status groups, by various characteristics



Source: NCES, National Education Longitudinal Study: 1988-94

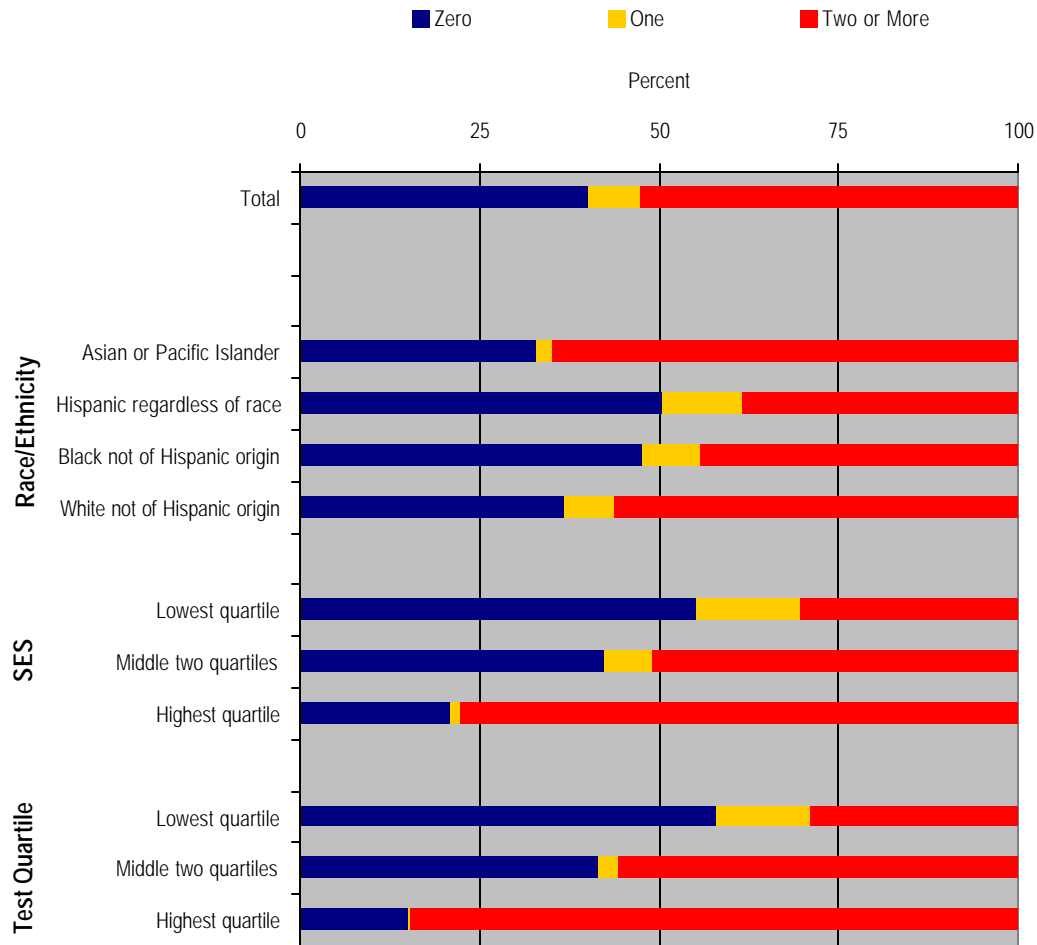
Applying to College



epi

Improving educational policy and practice through research

Percentage of 1988 eighth graders who reported numbers of PSE applications filed in 1992, by various characteristics

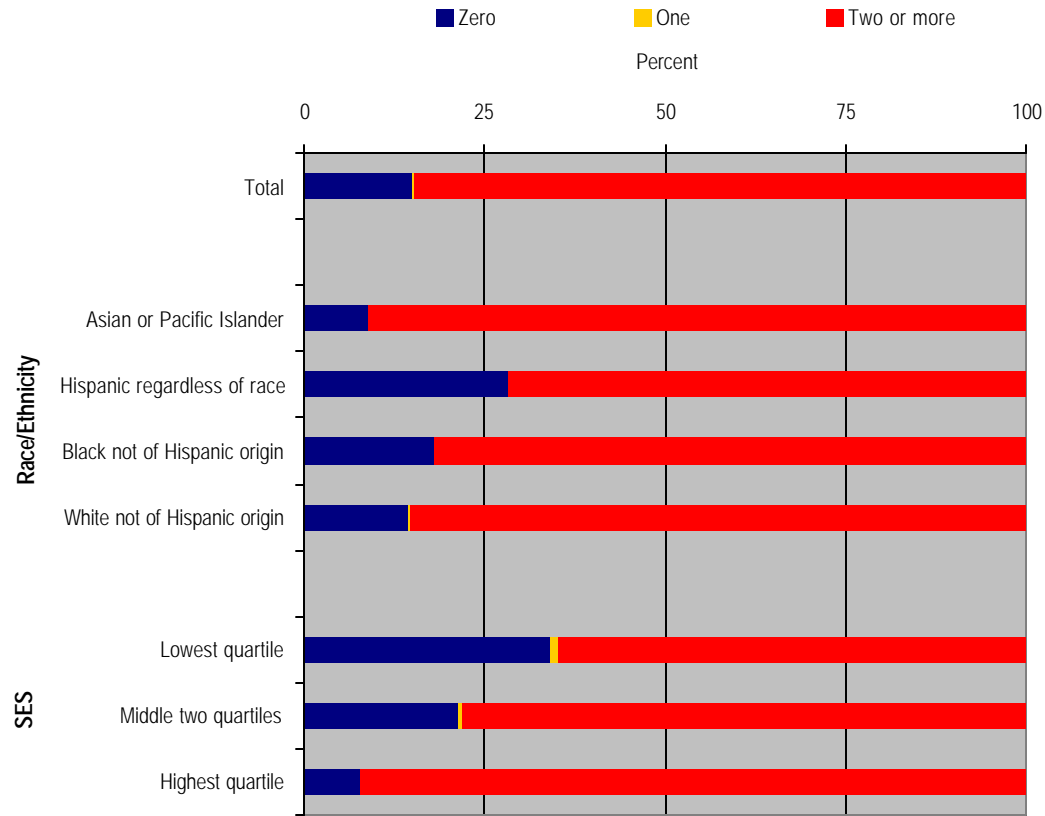


Source: NCES, National Education Longitudinal Study: 1988-94



Improving educational policy and practice through research

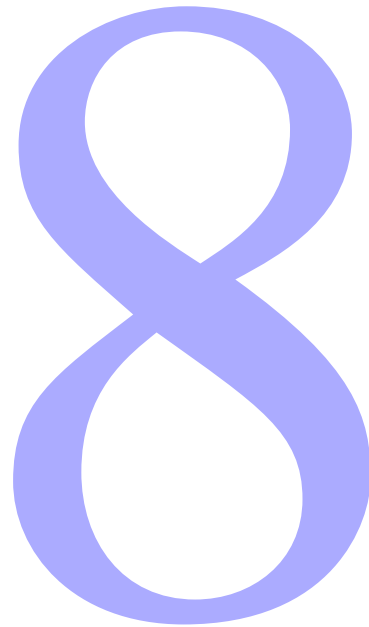
Percentage of 1988 eighth graders in the highest test quartile who reported numbers of PSE applications filed in 1992, by various characteristics



Source: NCES, National Education Longitudinal Study: 1988-94



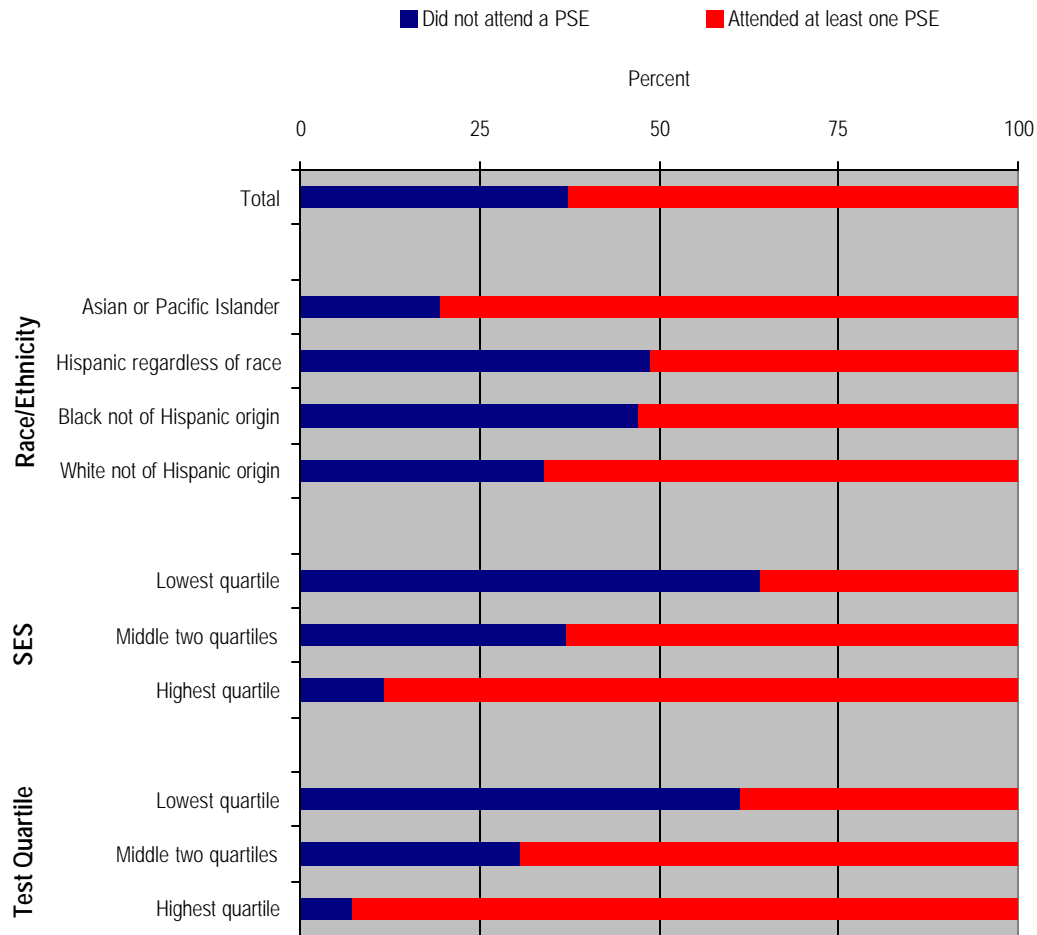
College Enrollment



epi

Improving educational policy and practice through research

Percentage of 1988 eighth graders reporting attendance at a postsecondary institution (PSE) by 1994, by various characteristics

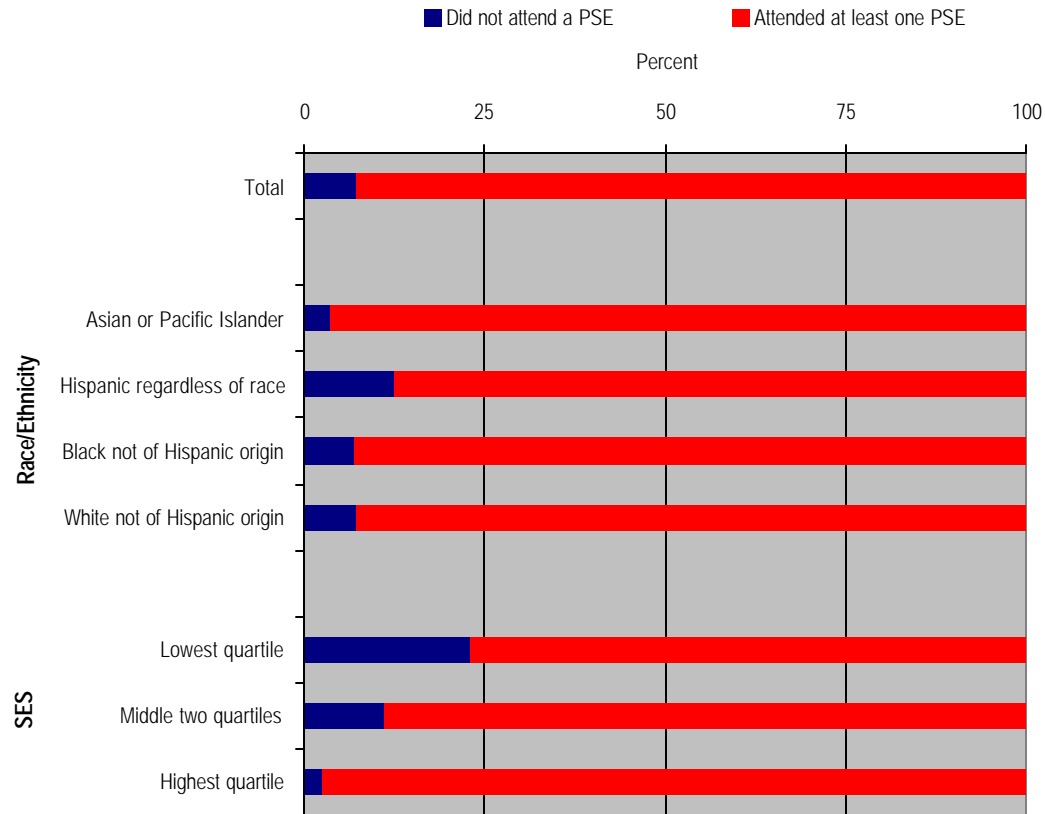


Source: NCES, National Education Longitudinal Study: 1988-94



Improving educational policy and practice through research

Percentage of 1988 eighth graders in the highest 1992 test quartile reporting attendance at a postsecondary institution (PSE) by 1994, by various characteristics

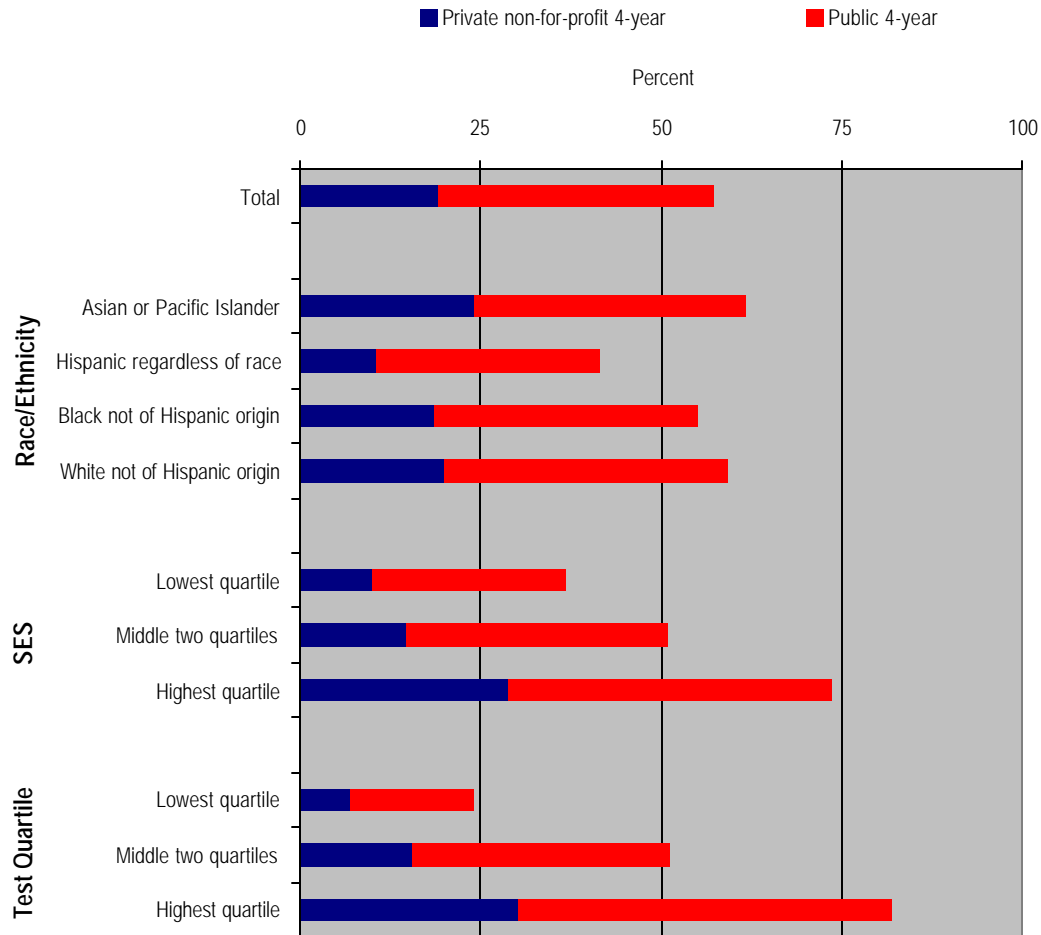


Source: NCES, National Education Longitudinal Study: 1988-94



Improving educational policy and practice through research

Percentage of 1988 eighth graders with postsecondary enrollment by 1994 by type of first institution attended, by various characteristics

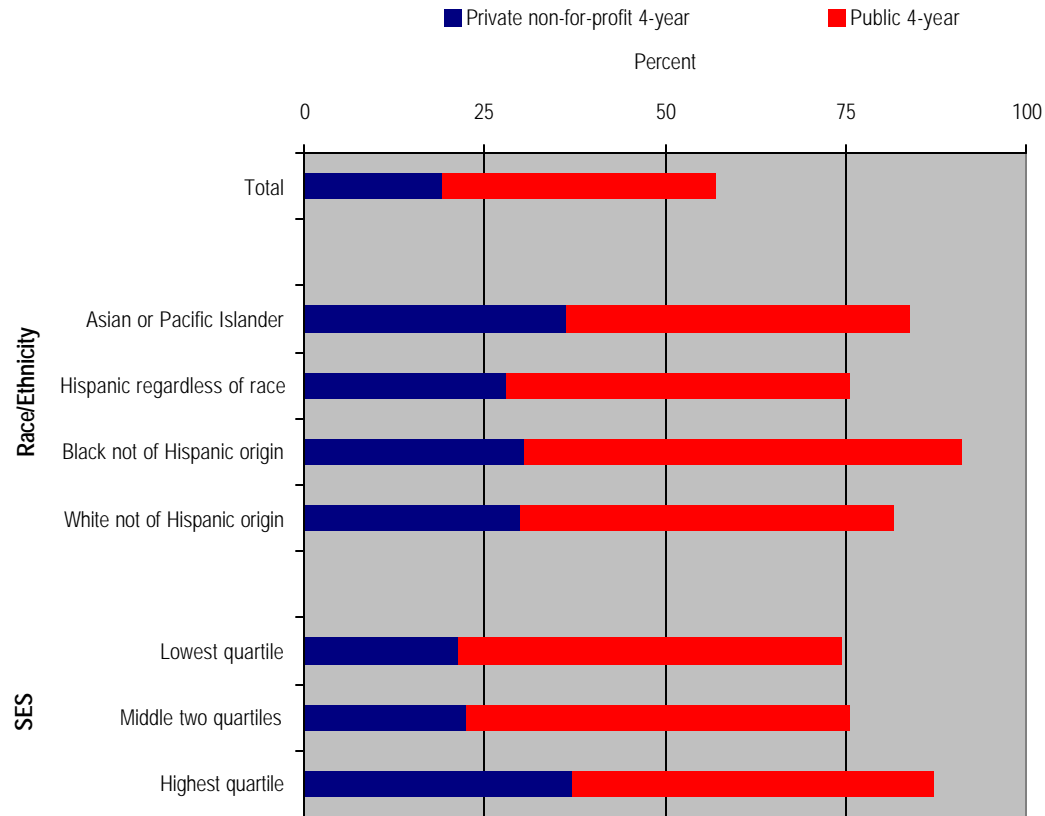


Source: NCES, National Education Longitudinal Study: 1988-94



Improving educational policy and practice through research

Percentage of 1988 eighth graders in the highest 1992 test quartile with postsecondary enrollment by 1994 by type of first institution attended, by various characteristics



Source: NCES, National Education Longitudinal Study: 1988-94



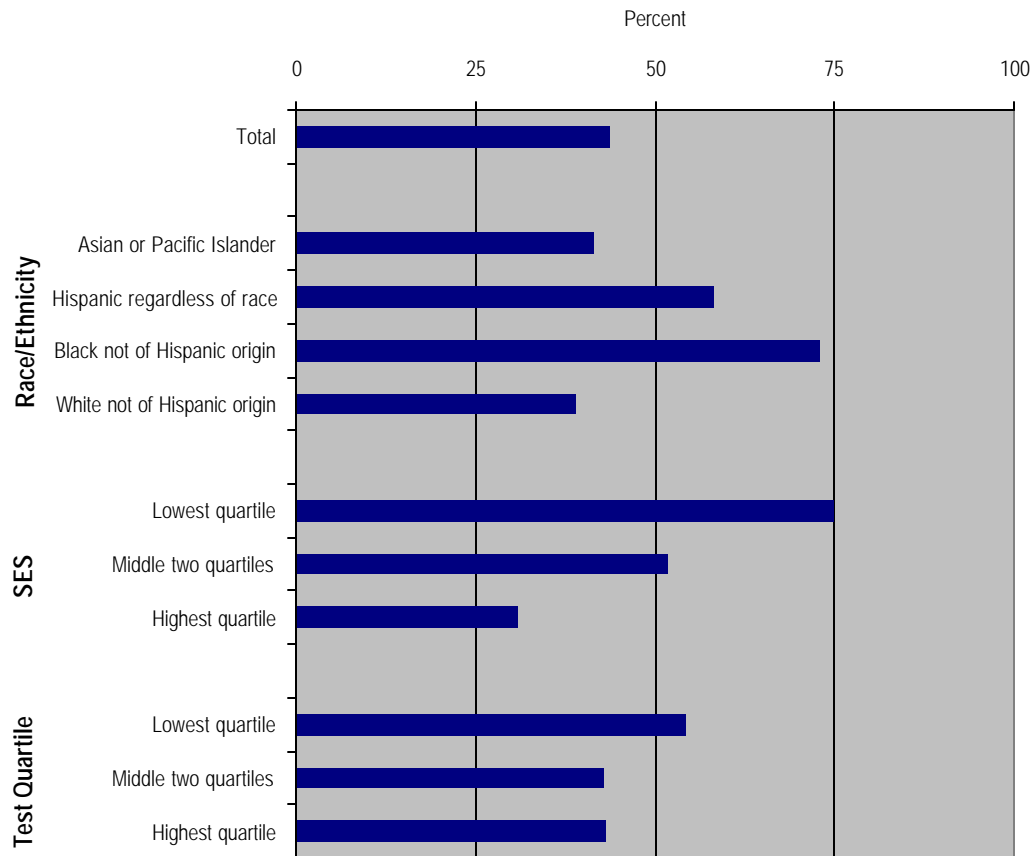
Financial Aid

9

epi

Improving educational policy and practice through research

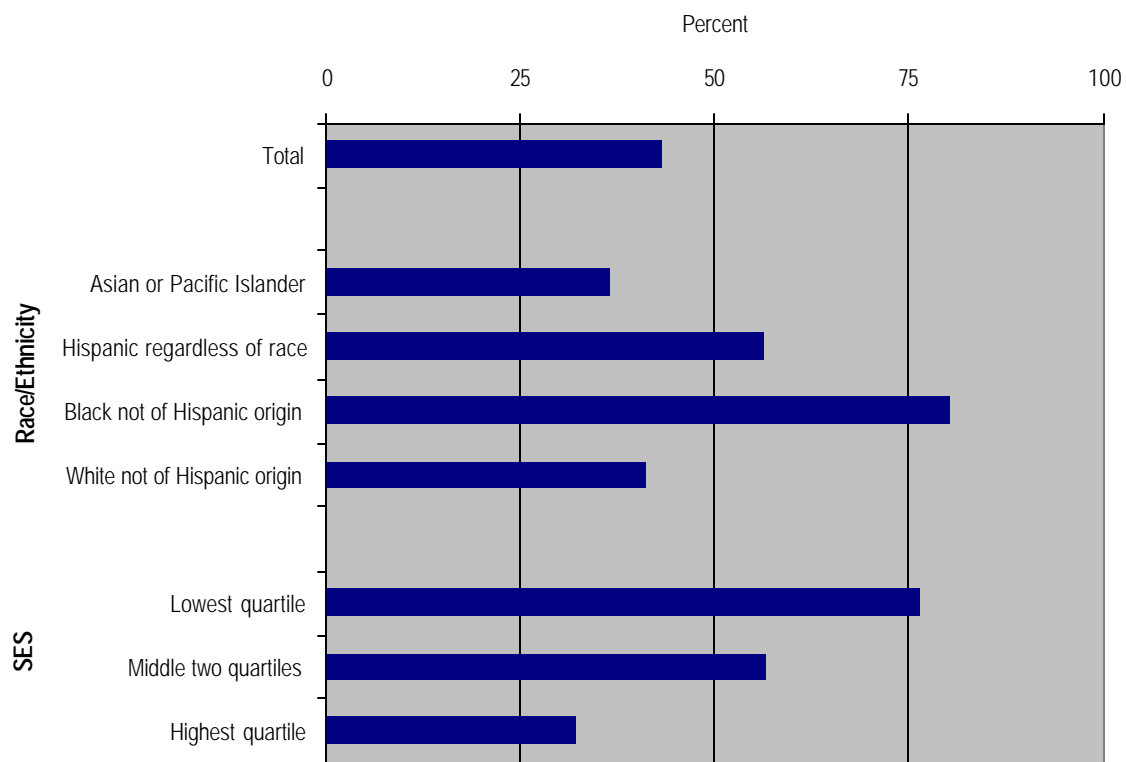
Percentage of 1988 eighth graders attending public or private not-for-profit four-year institutions by 1994 who rated financial aid as very important in their consideration of which institution to attend, by various characteristics



Source: NCES, National Education Longitudinal Study: 1988-94



Percentage of 1988 eighth graders in the highest 1992 test quartile attending public or private not-for-profit four-year institutions by 1994 who rated financial aid as very important in their consideration of which institution to attend

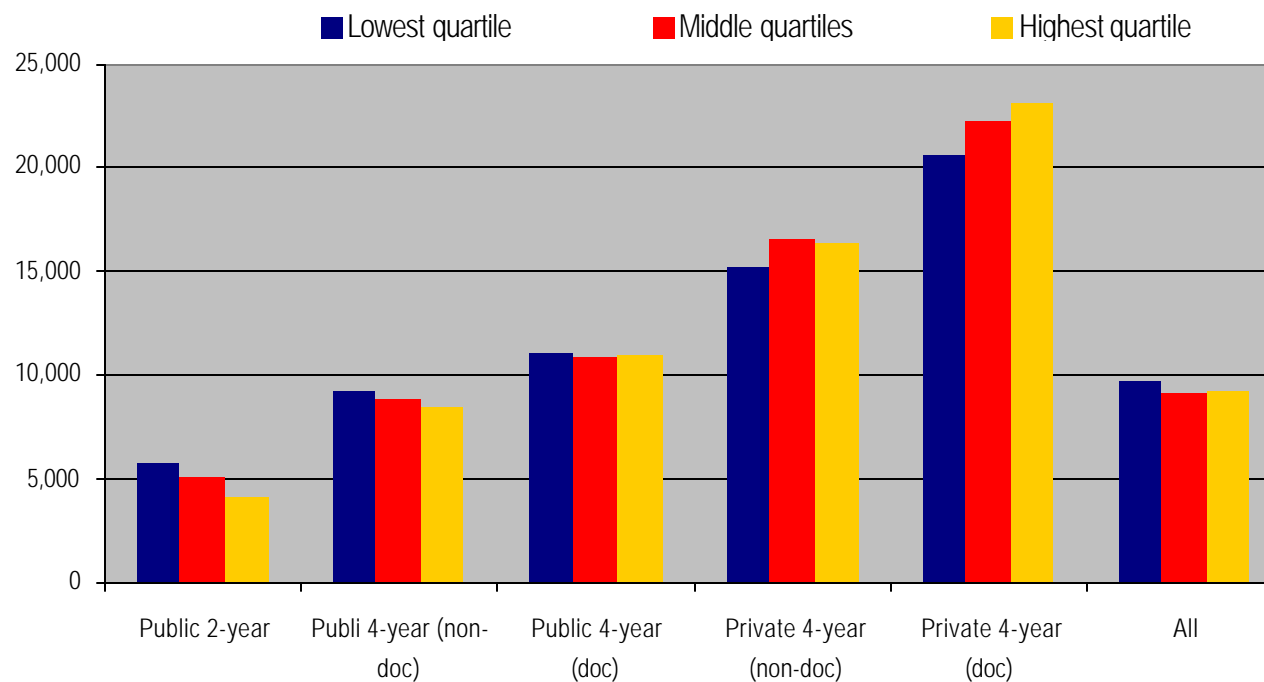


Source: NCES, National Education Longitudinal Study: 1988-94



Improving educational policy and practice through research

Average total price of attendance according to type of institution, by institutional and student characteristics: 1999–2000

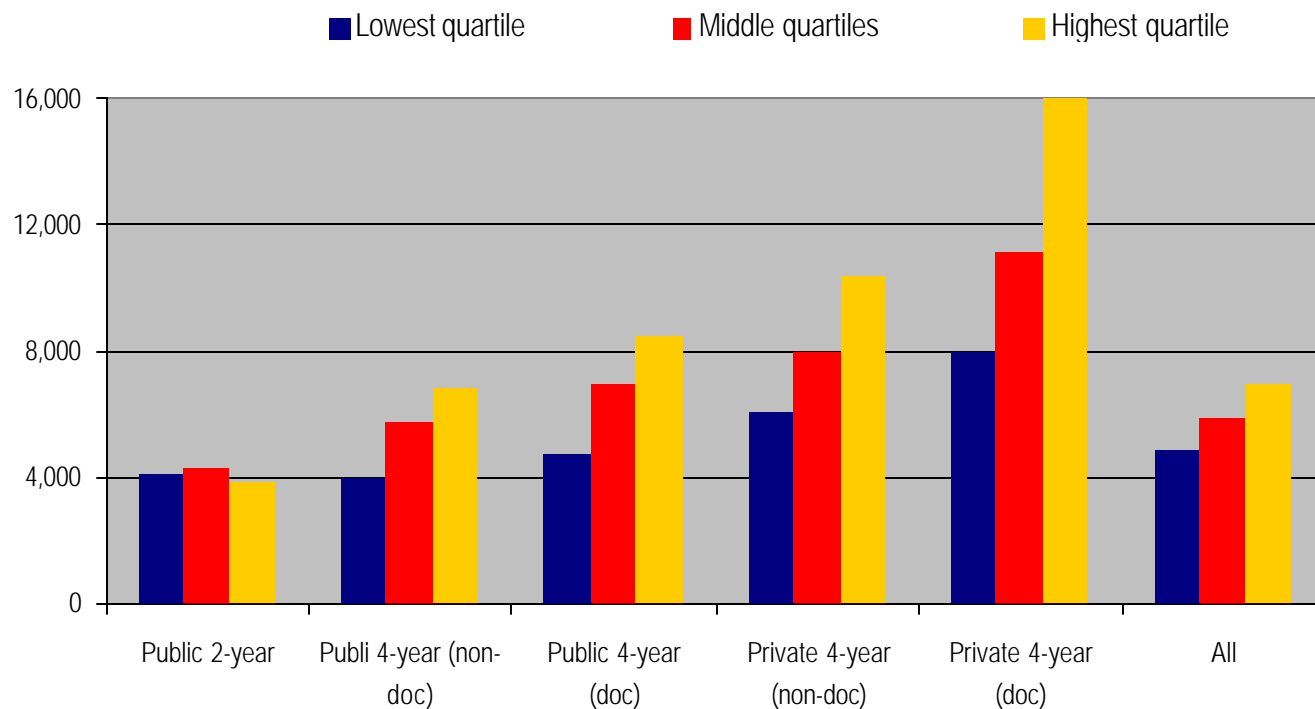


SOURCE: NCES, *Student Financing of Undergraduate Education: 1999–2000*, NCES-2002-167



Improving educational policy and practice through research

Average net price (total price of attendance less total aid) of postsecondary education among undergraduates according to type of institution, by institutional and student characteristics: 1999–2000

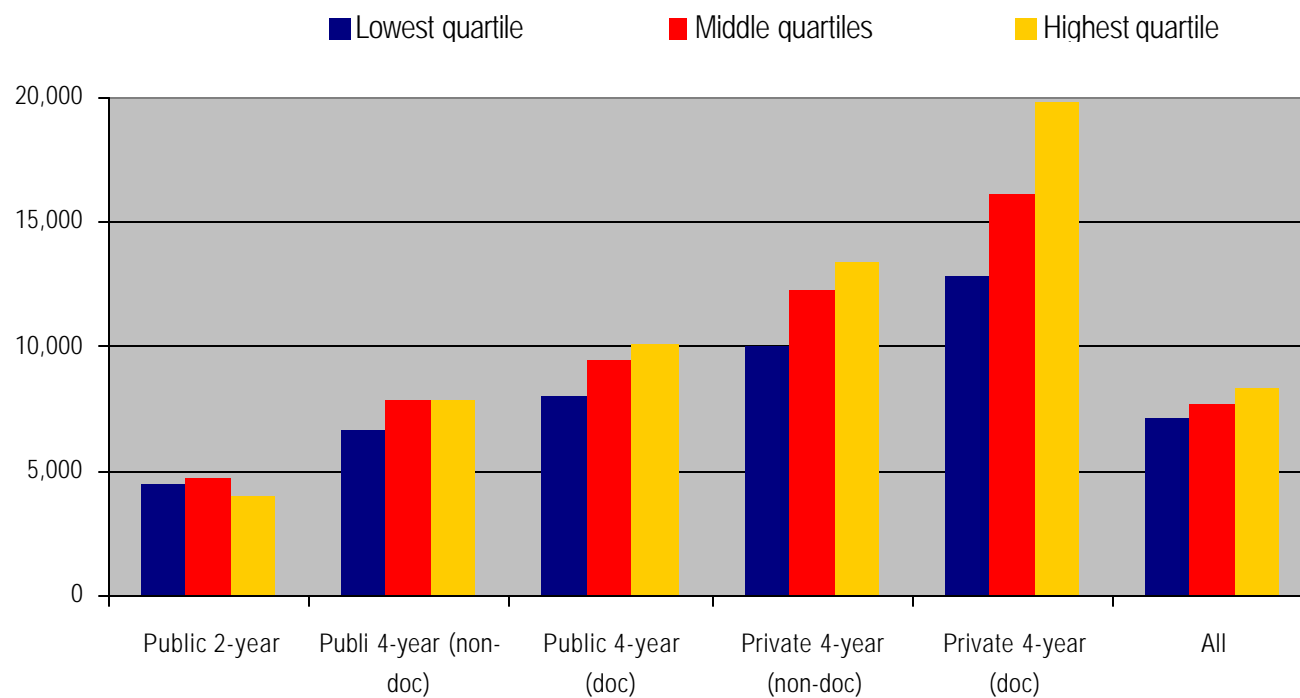


SOURCE: NCES, *Student Financing of Undergraduate Education: 1999–2000*, NCES-2002-167



Improving educational policy and practice through research

Average net price (total price of attendance less grant aid) of postsecondary education among undergraduates according to type of institution, by institutional and student characteristics: 1999–2000



SOURCE: NCES, *Student Financing of Undergraduate Education: 1999–2000*, NCES-2002-167

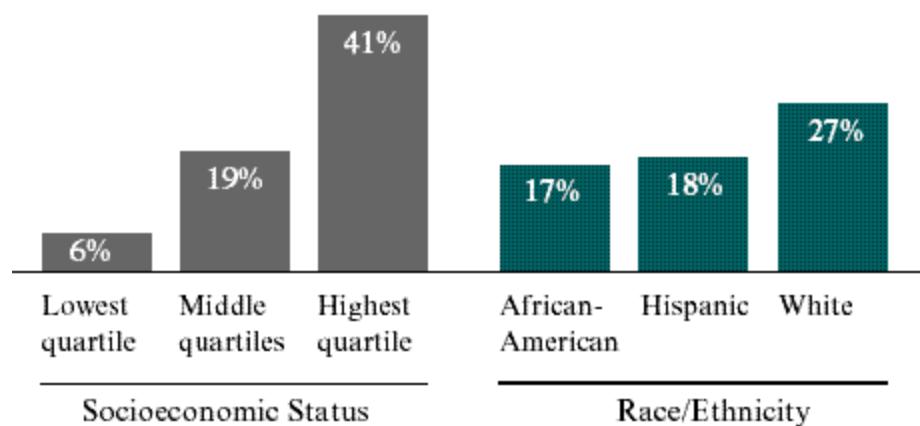


College Persistence and Completion

10

epi

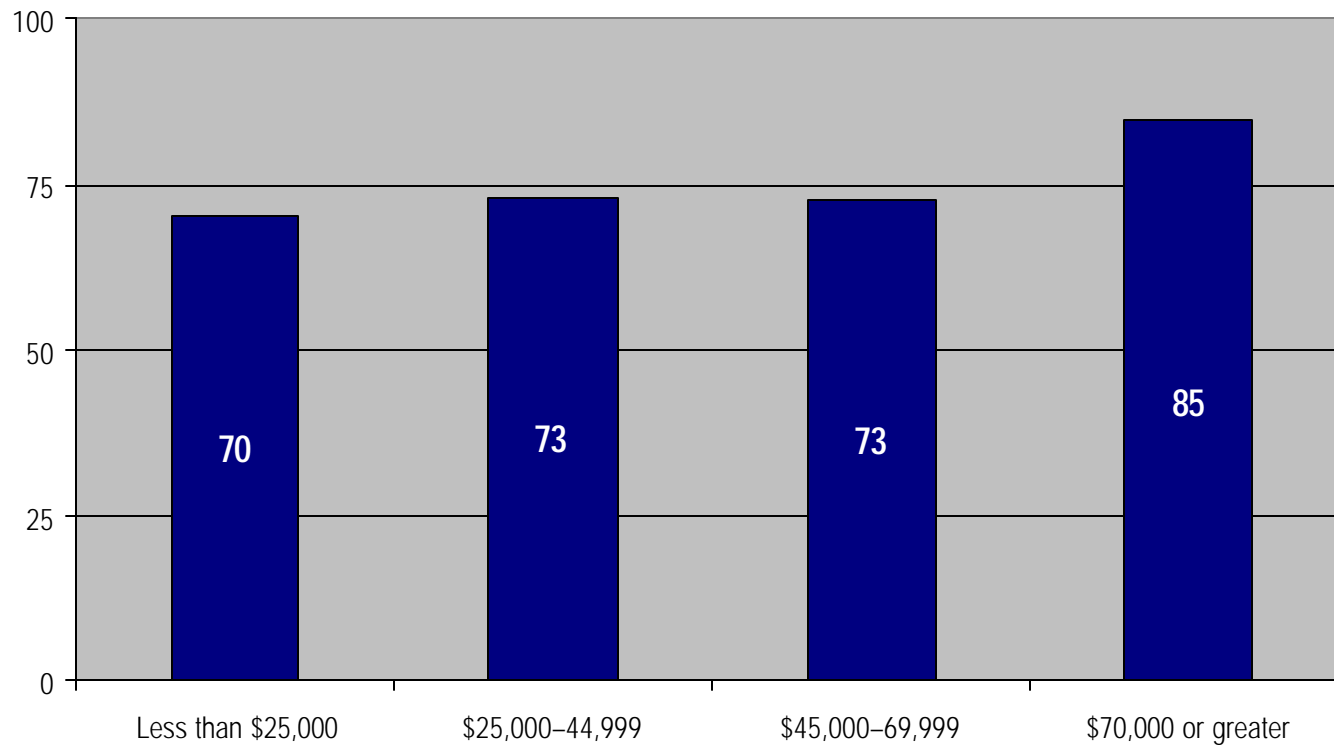
Percentage of 1989 beginning postsecondary students who received a bachelor's degree or higher as of 1994 (by socioeconomic status and race/ethnicity).



Source: *Descriptive Summary of 1989-90 Beginning Postsecondary Students: 5 Years Later* (Washington, D.C.: U.S. Department of Education, National Center for Education Statistics, 1996), 34, Table 1.3.



Persistence and attainment rate of 1995-96 BPS students 3-years after enrollment



SOURCE: NCES, *Descriptive Summary of 1995-96 Beginning Postsecondary Students: Three Years Later*, NCES 2000-154



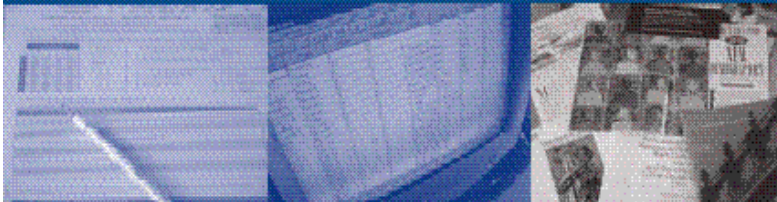
- Access to Early Childhood Programming
- College Preparatory Course Selection
- Achievement in High School Academic Course Work
- Access to Well-Qualified Teachers
- College Admissions Testing
- High School Graduation
- Applying to College
- College Enrollment
- Financial Aid
- College Persistence and Completion



Improving educational policy and practice through research

eipi

Educational Policy Institute



*Improving educational policy
& practice through research*

www.educationalpolicy.org

Watson Scott Swail, Ed.D., President

Educational Policy Institute, Inc.

wswail@educationalpolicy.org

Washington DC Office

25 Ludwell Lane
Stafford, VA 22554

Los Angeles Office

1600 Campus Road
Los Angeles, CA

1 (877) e-POLICY

www.educationalpolicy.org