

*Improving educational policy and practice through research*

# Latino Youth and the Pathway to College

**Dr. Watson Scott Swail**

*wswail@educationalpolicy.org*

President, Educational Policy Institute  
Washington, DC

April 5, 2004

The Sixth Annual Latino Education Conference  
Atlantic City, NJ



*www.educationalpolicy.org*

# This Study

- Sponsored by the Pew Hispanic Center
- Used NELS:88/00 Database
- Publication date: May 2004
- Powerpoint available on EPI website

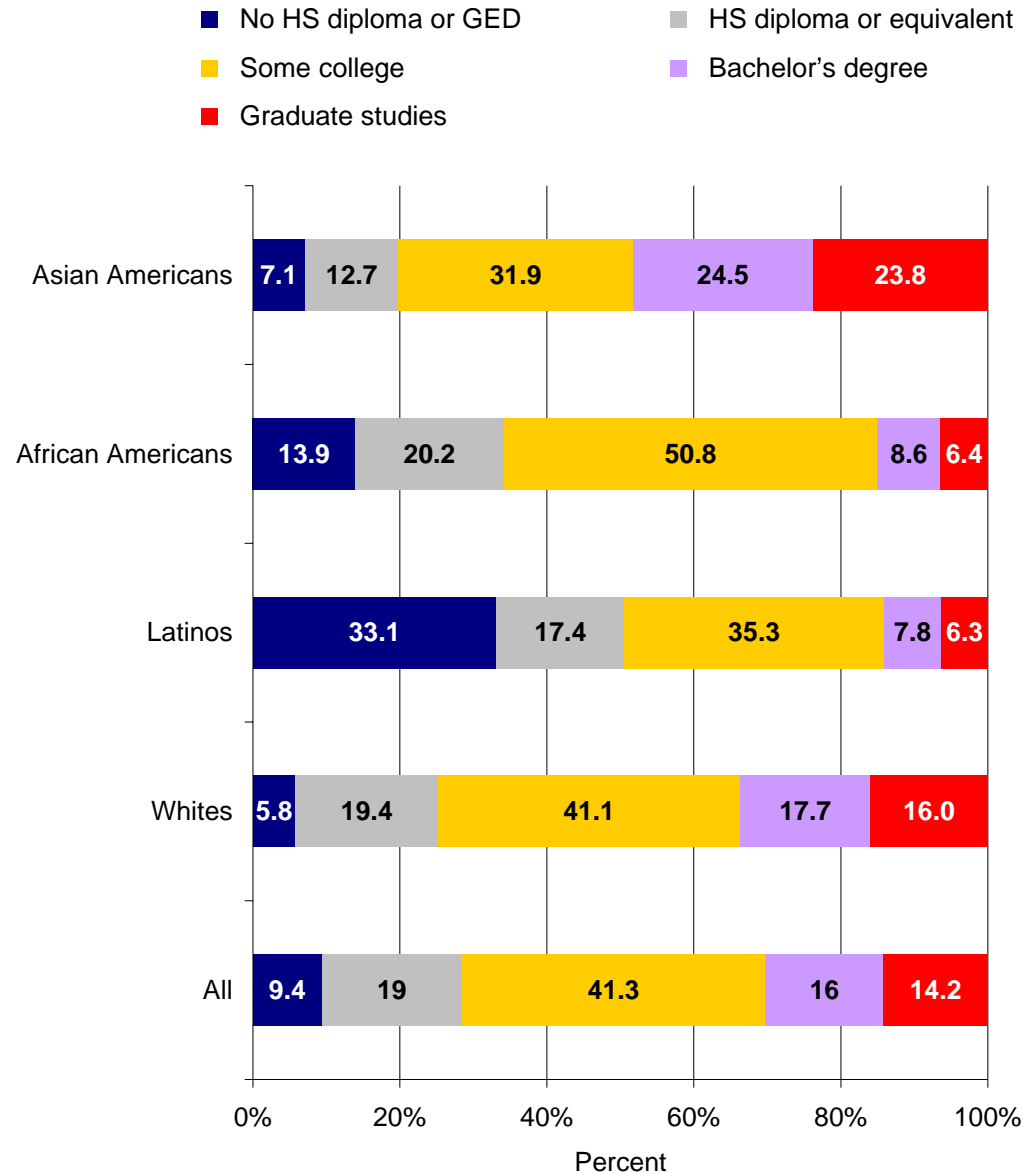
# Improving educational policy and practice through research

Exhibit X. Family Income of 1988 NELS 8th grader cohort



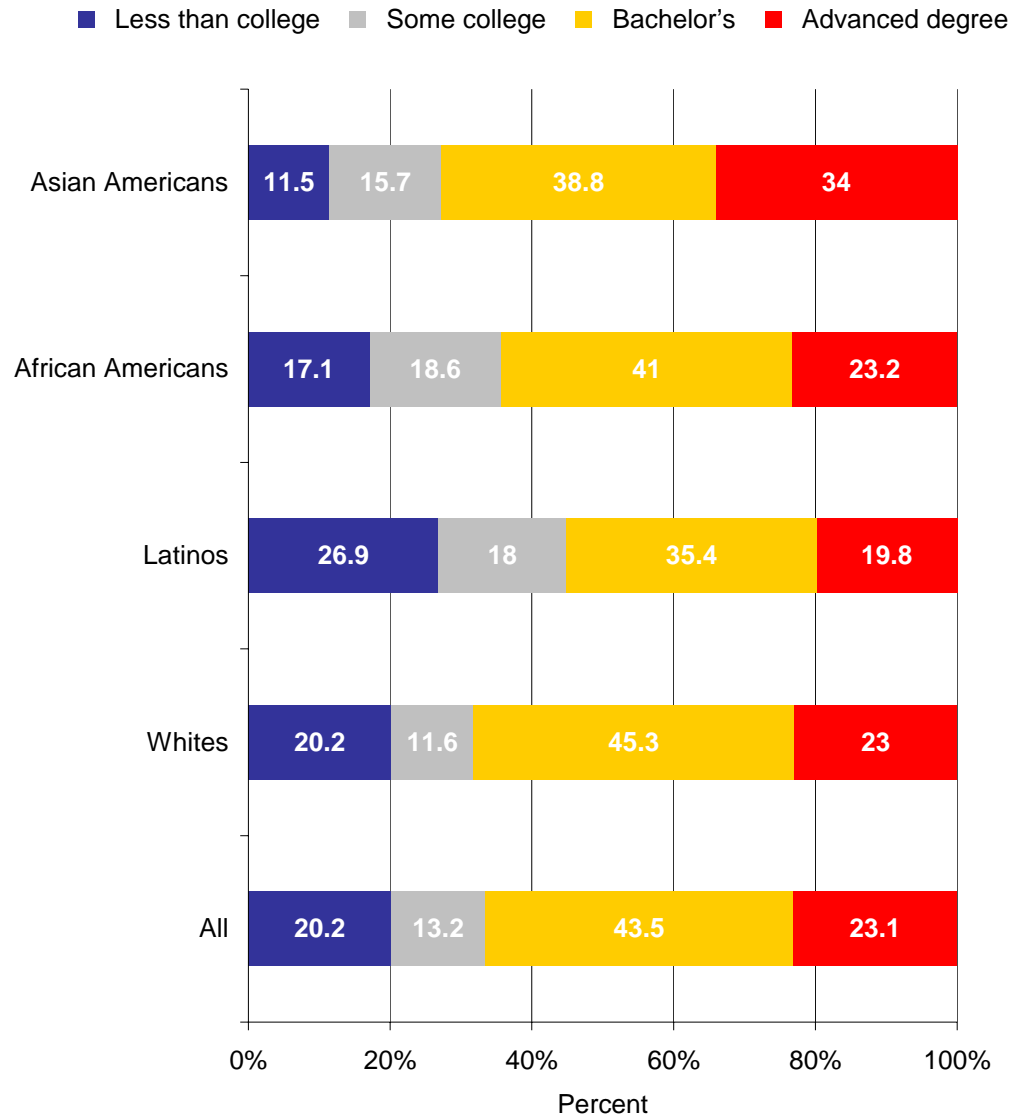
# Improving educational policy and practice through research

Exhibit X. Highest parental education of 1988 8th graders cohort



# Improving educational policy and practice through research

Exhibit X. Highest degree planned by students in the 1988 NELS 8th grader cohort in 8th grade



# Improving educational policy and practice through research

Exhibit X. Distribution of 1988 NELS 8th grader cohort by level of academic preparedness

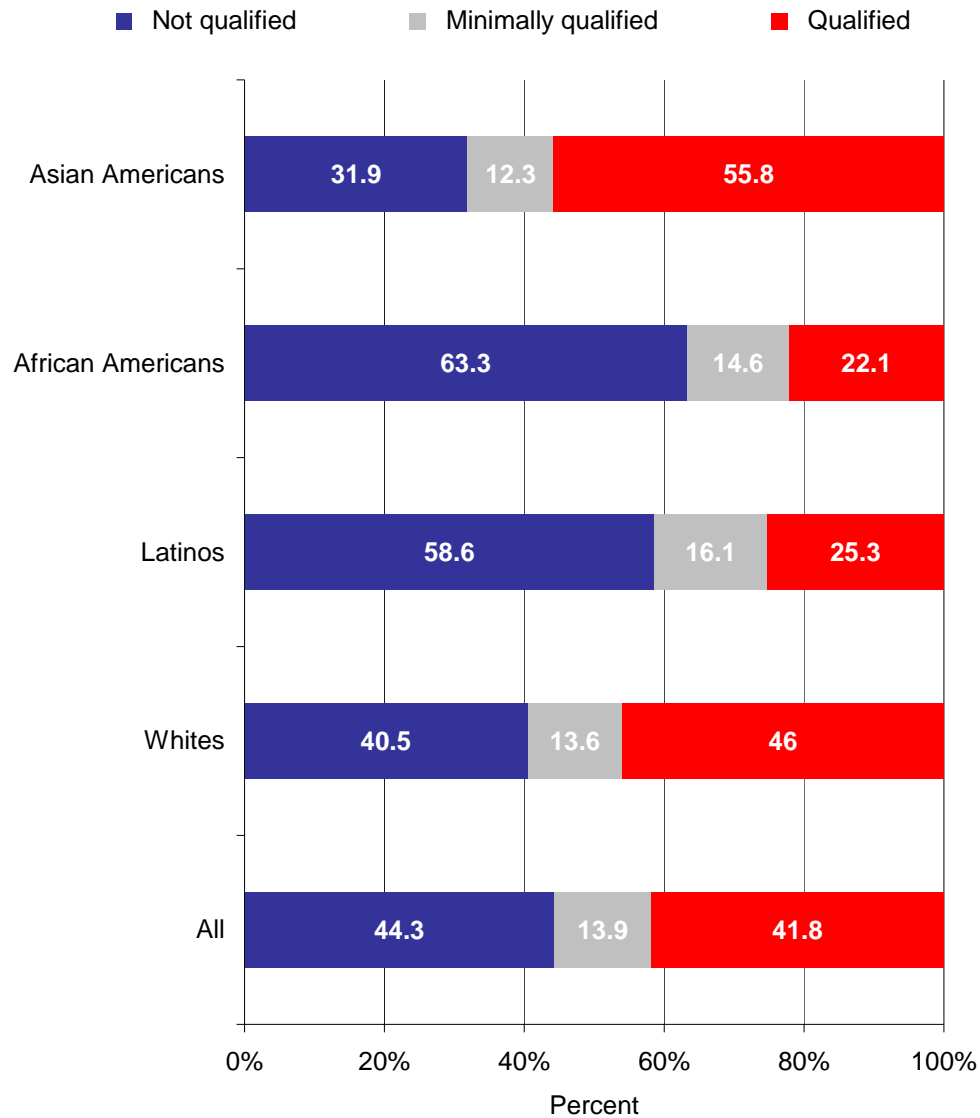


Exhibit X. Highest level of mathematics completed during high school by 1988 NELS 8th grader cohort

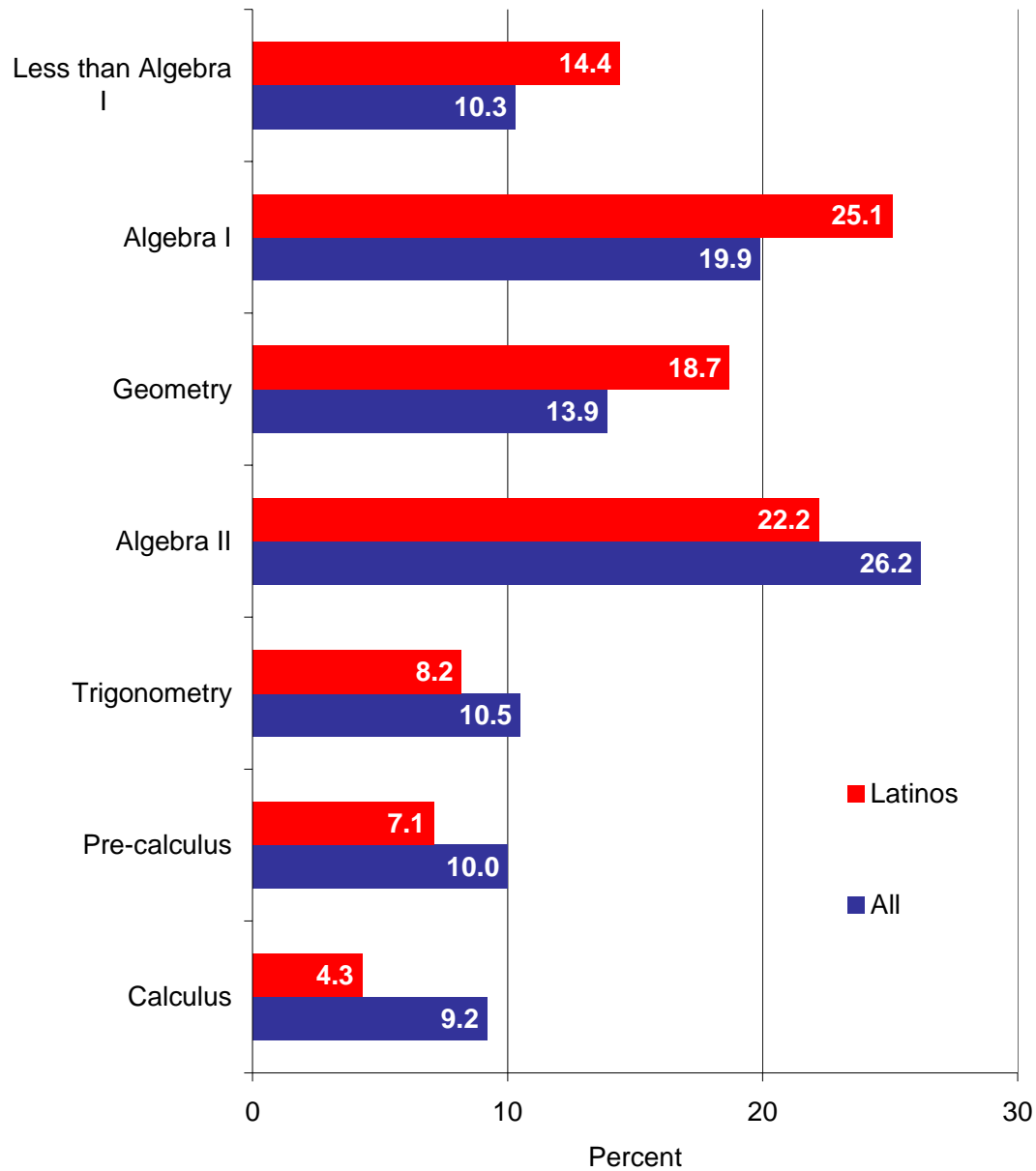
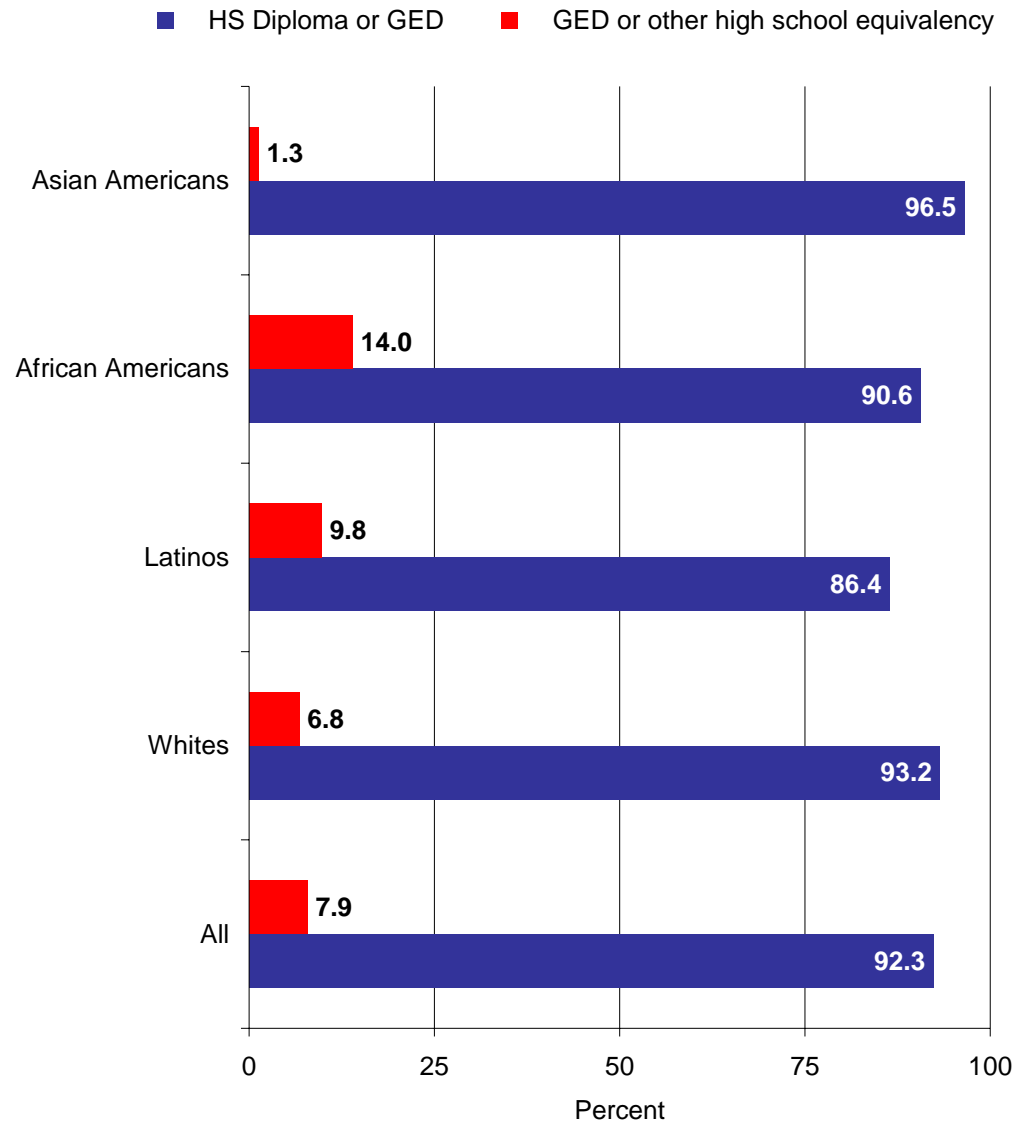
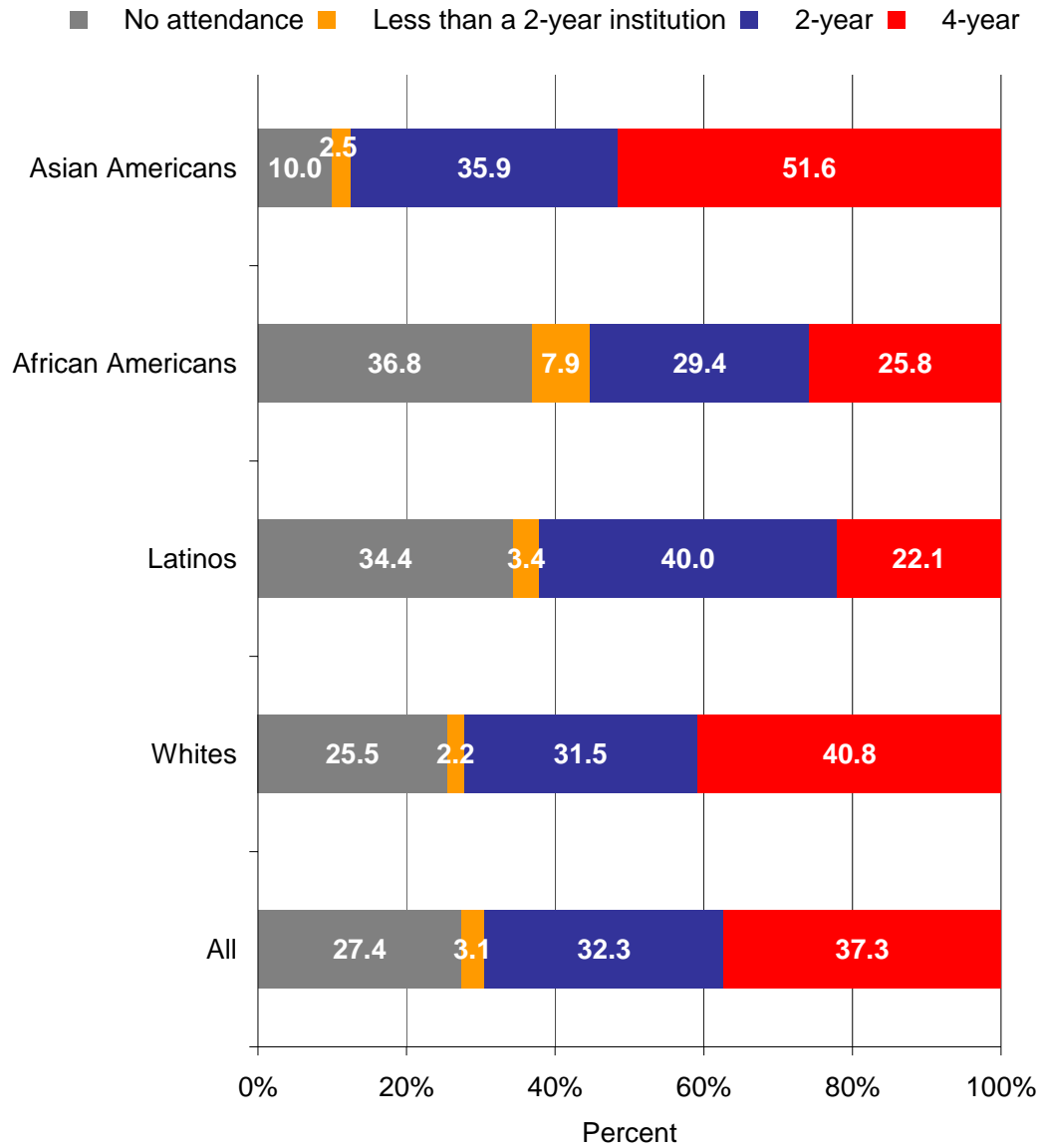


Exhibit X. Percent of 1988 NELS 8th grader cohort that received a high school diploma or GED



# Improving educational policy and practice through research

Exhibit X. Type of first postsecondary institution attended by 1988 NELS 8th grade cohort



# Improving educational policy and practice through research

Exhibit X. Type of first postsecondary institution attended by 1988 NELS 8th grade cohort

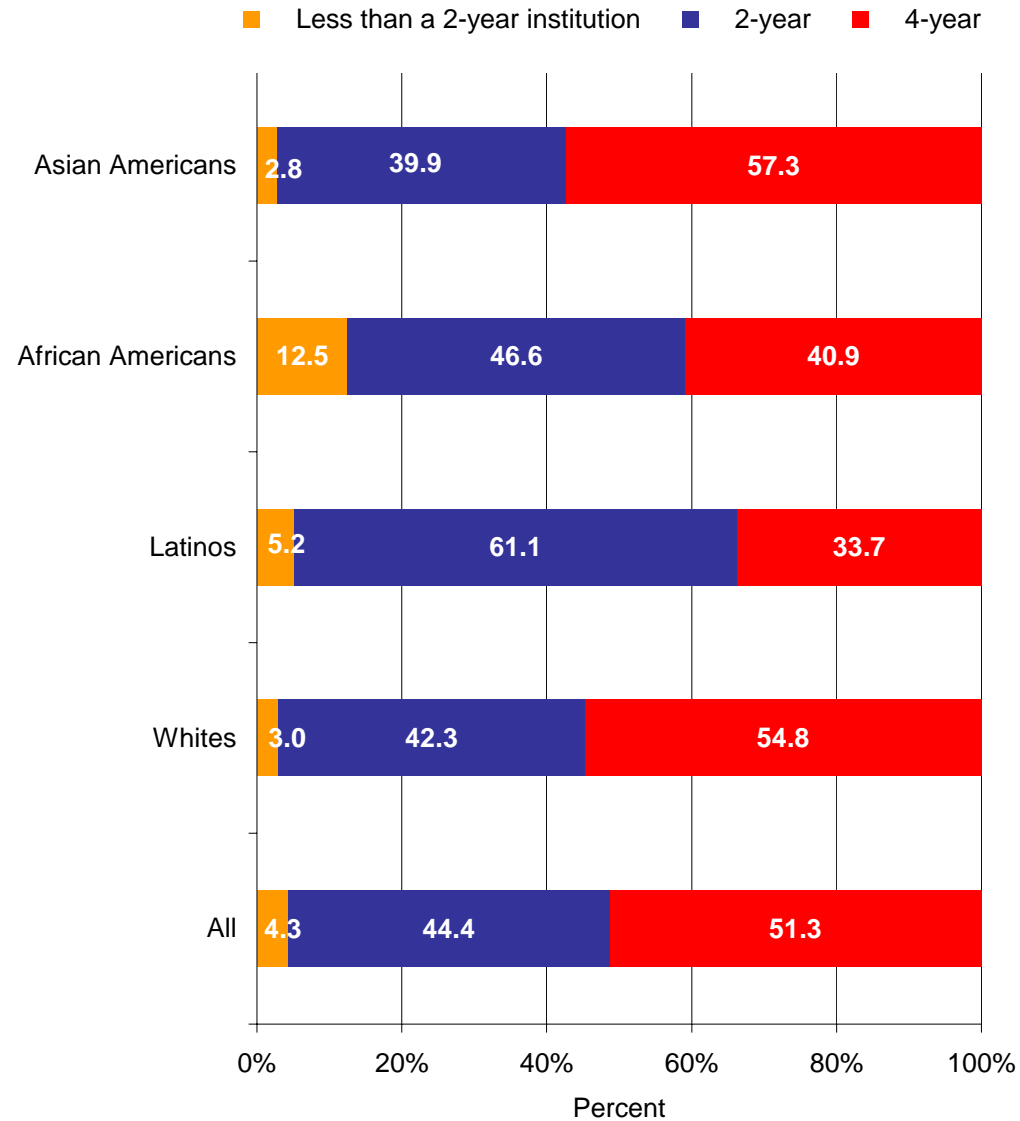


Exhibit X. Type of postsecondary institution attended by 1988 NELS 8th grade cohort

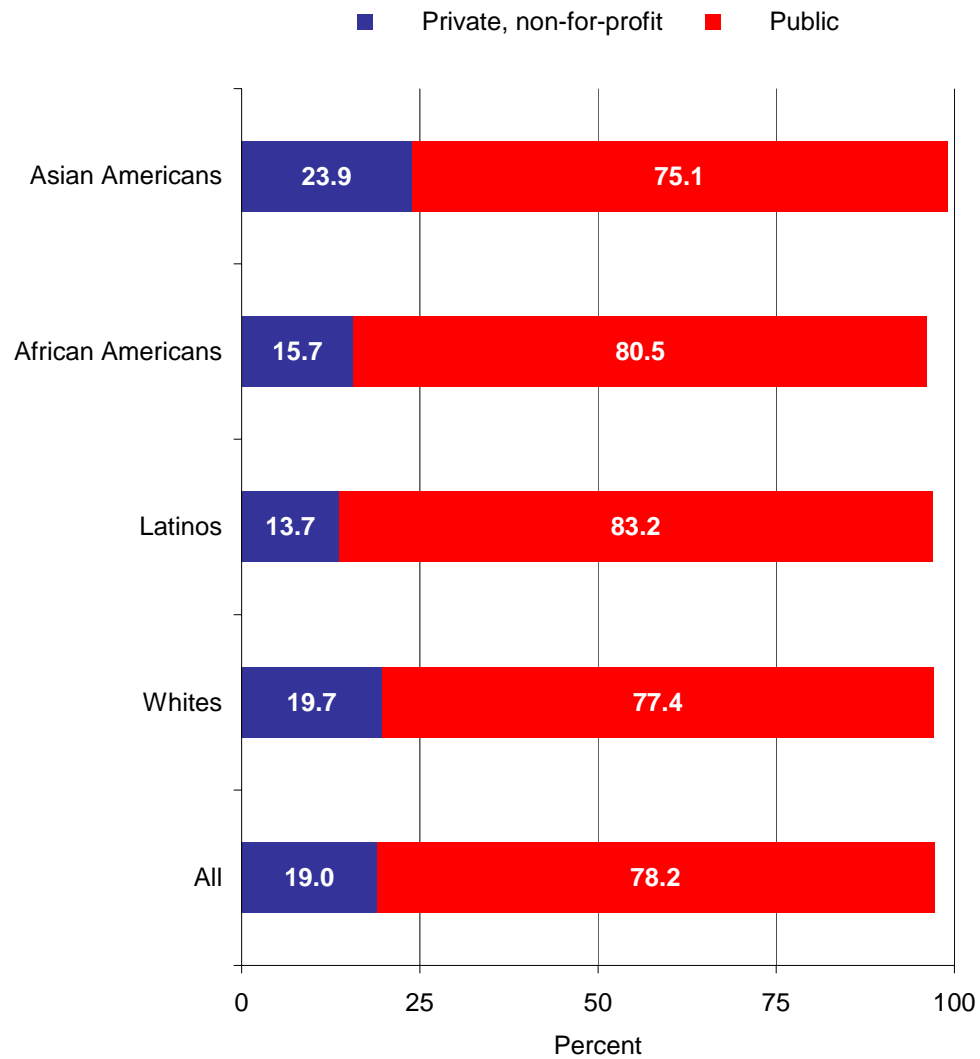


Exhibit X. Selectivity of postsecondary institution attended by 1988 NELS 8th grade cohort

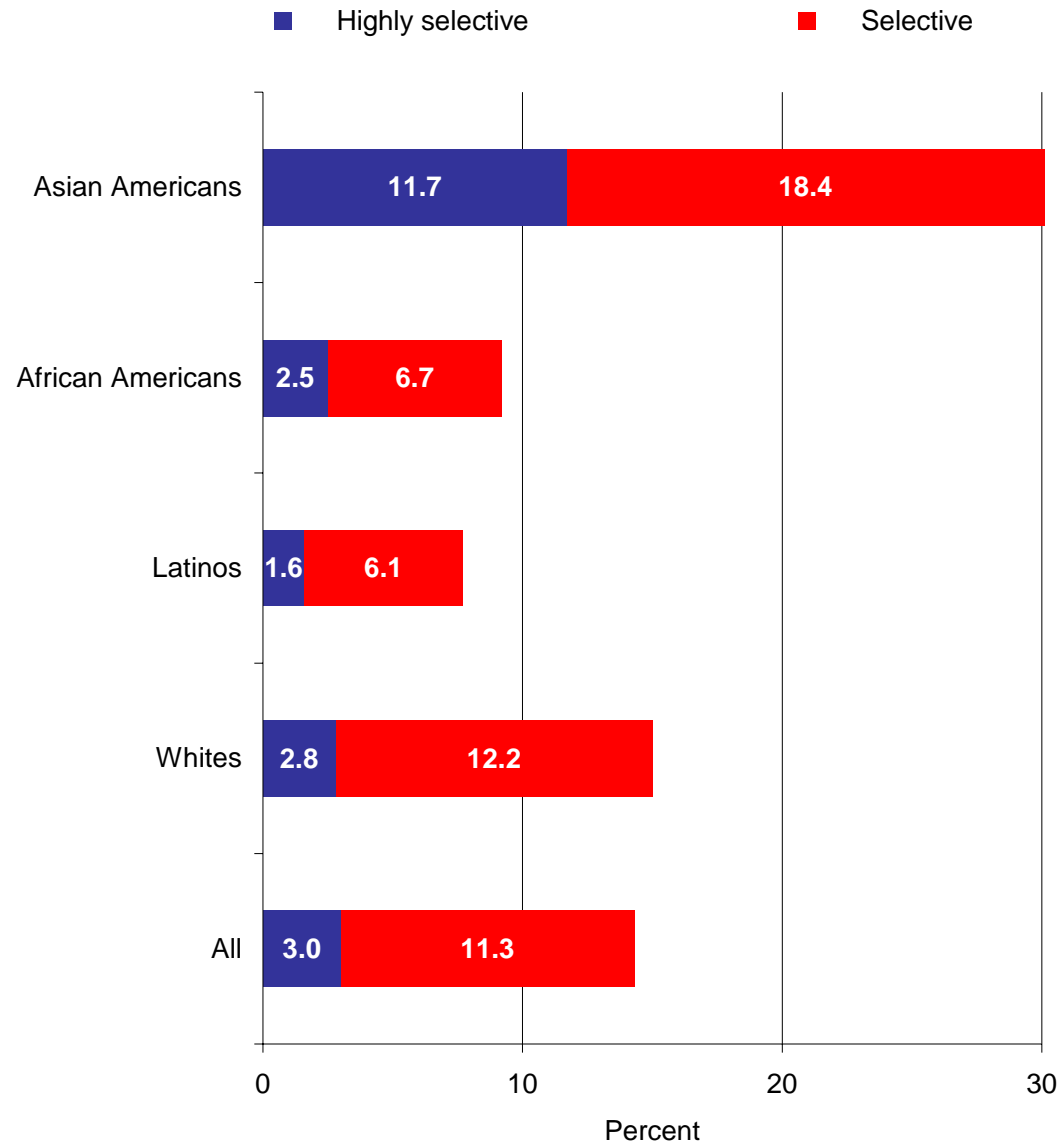


Exhibit X. Average tuition fees for 1st postsecondary institution attended by 1988 NELS 8th grader cohort



Exhibit X. Number of months between high school graduation and entry into postsecondary for 1988 NELS 8th grade cohort

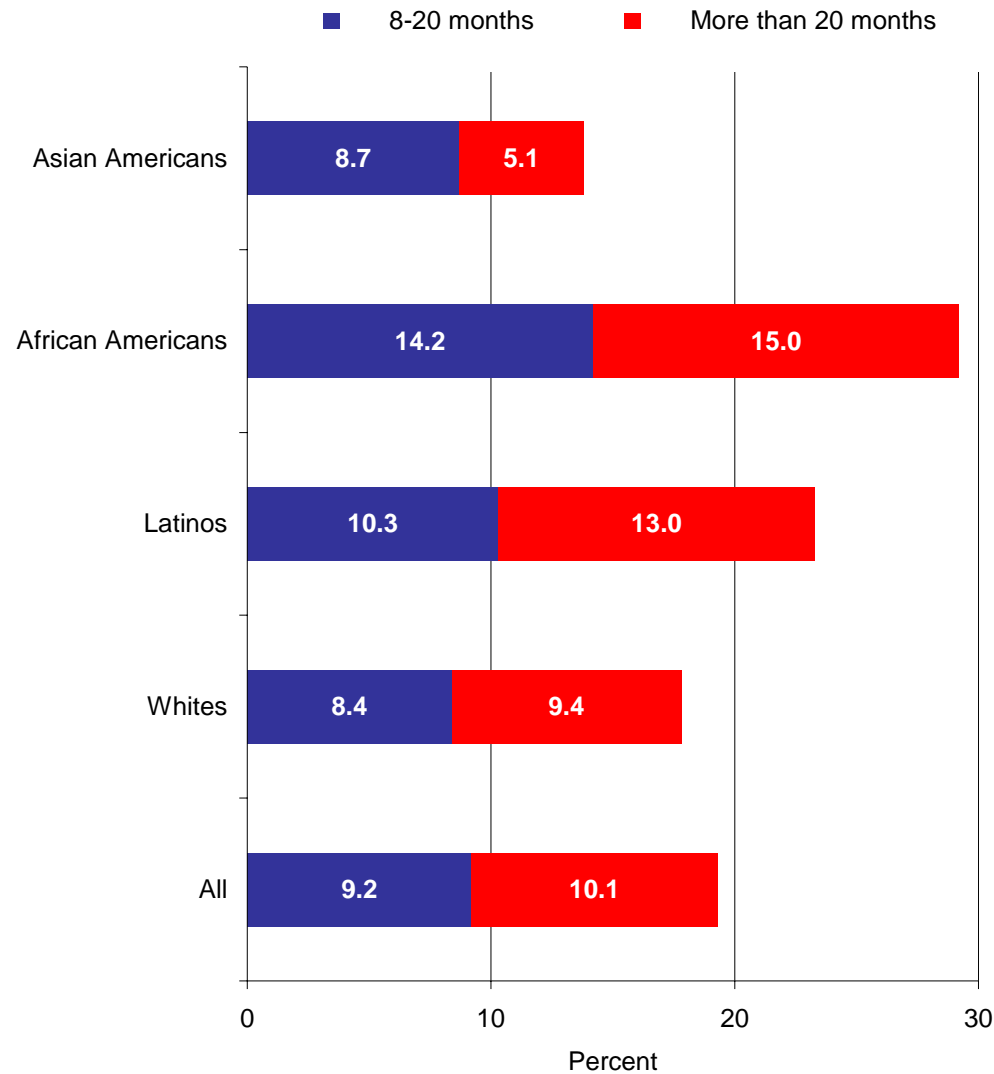


Exhibit X. Percent of postsecondary students from the 1988 NELS 8th grader cohort who attended PSE on a part-time basis

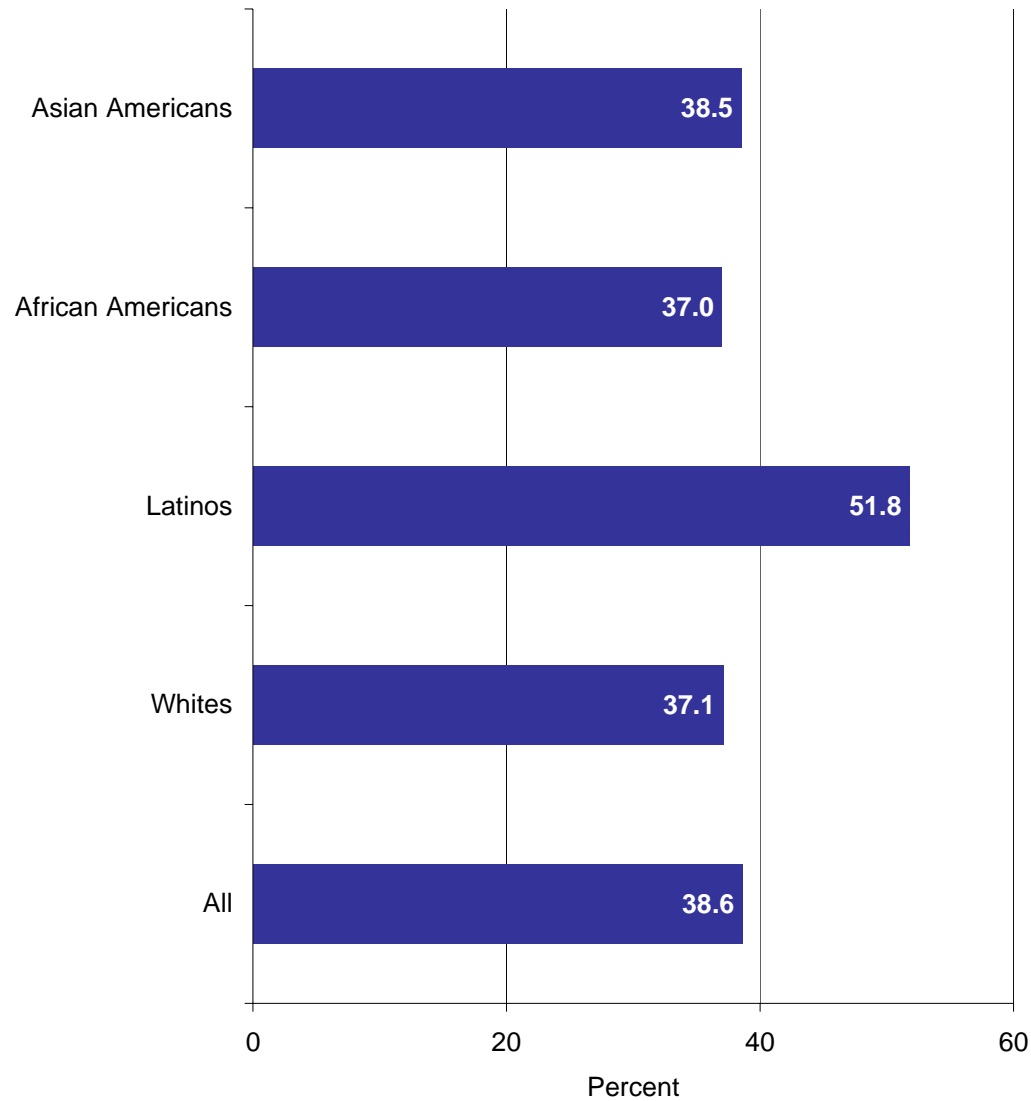
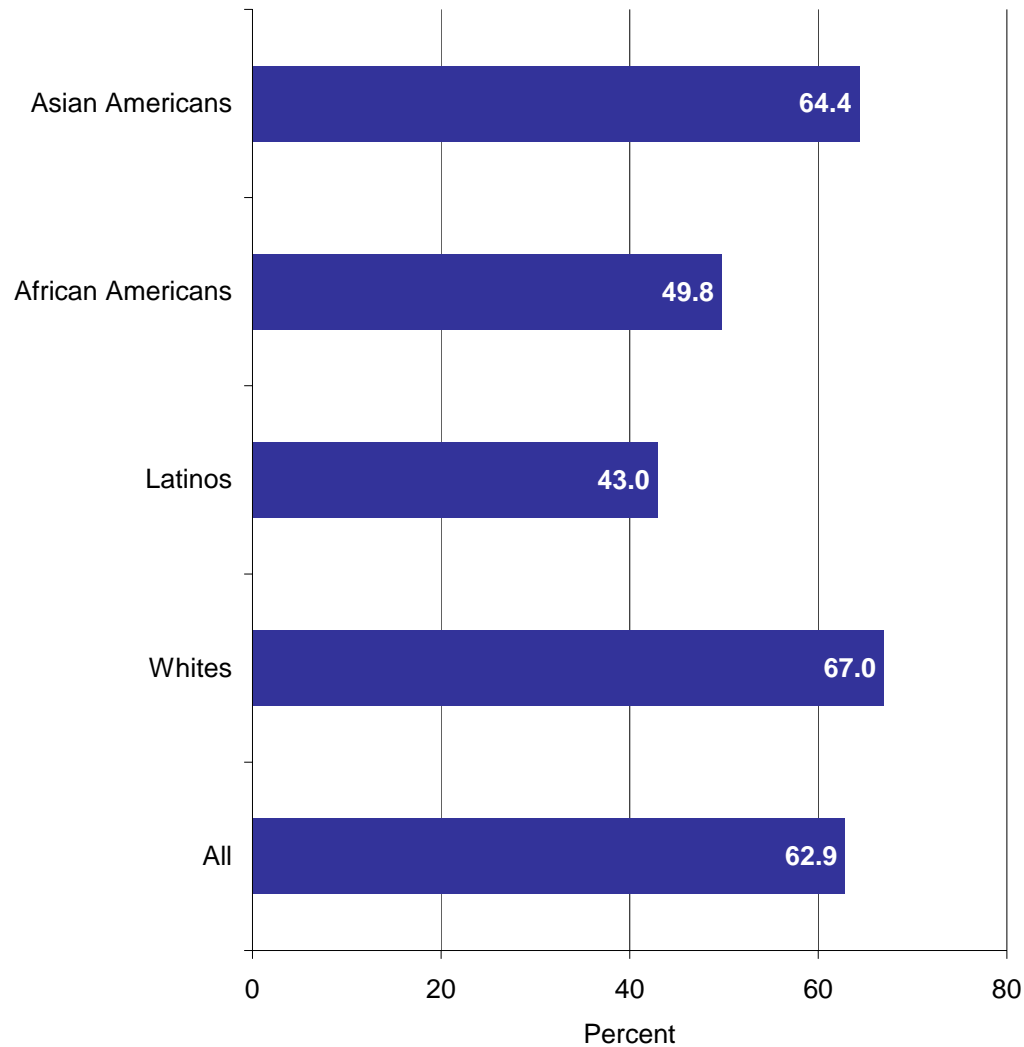
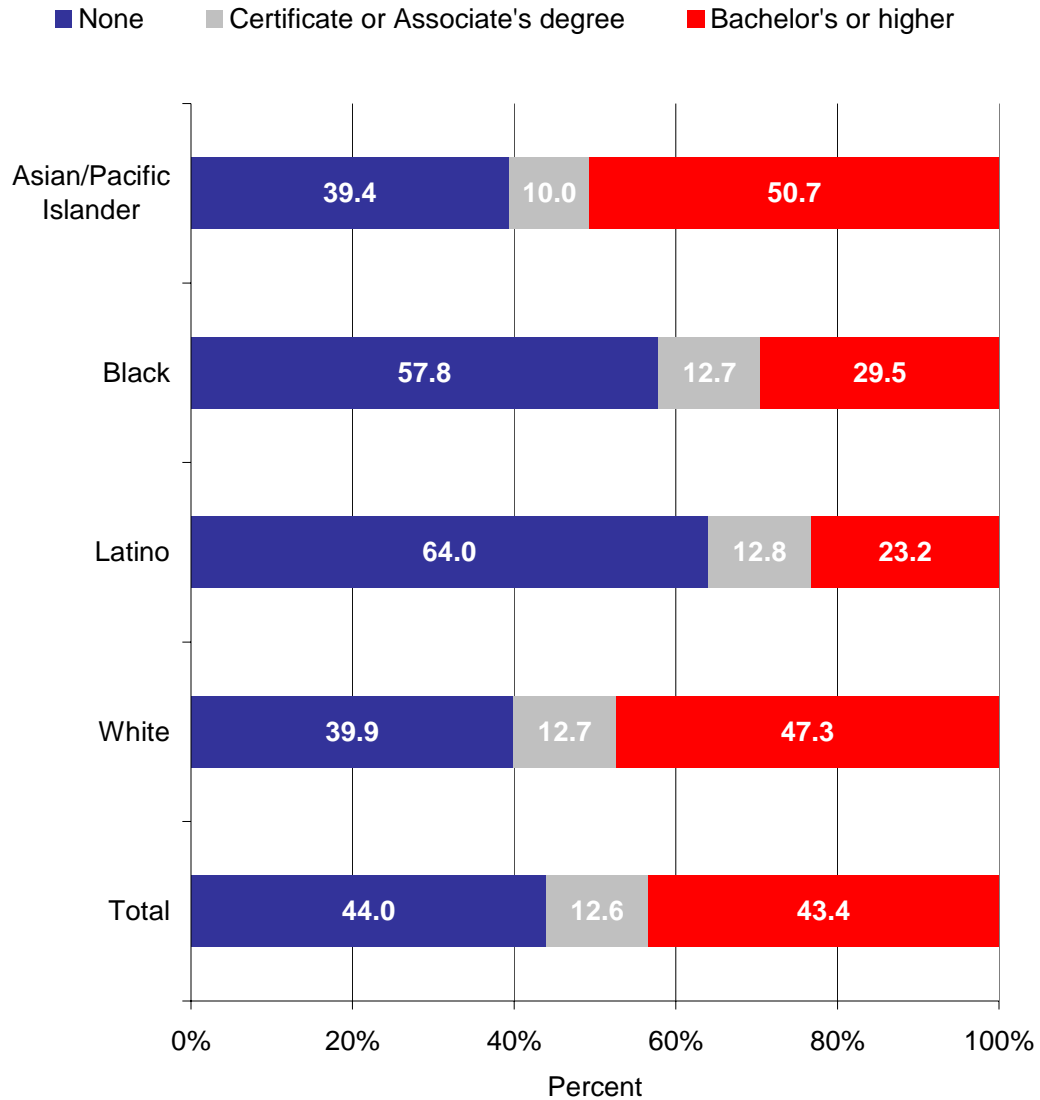


Exhibit X. Percent of postsecondary students from the 1988 NELS 8th grader cohort who maintained continuous enrollment while in PSE



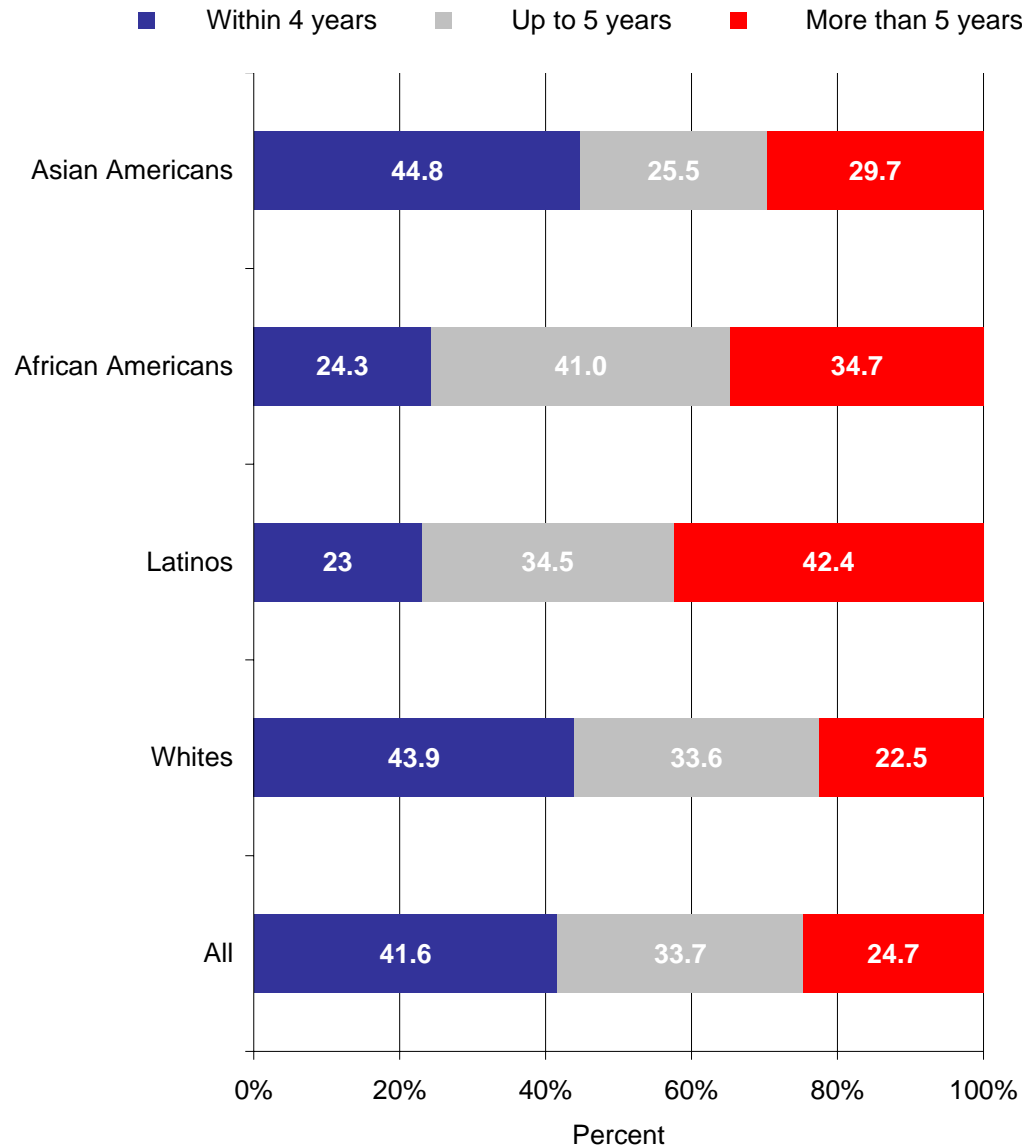
# Improving educational policy and practice through research

Exhibit X. Highest postsecondary degree attained by 2000  
(eight years after scheduled high school graduation) by 1988  
NELS 8th grade cohort that went on to postsecondary  
education



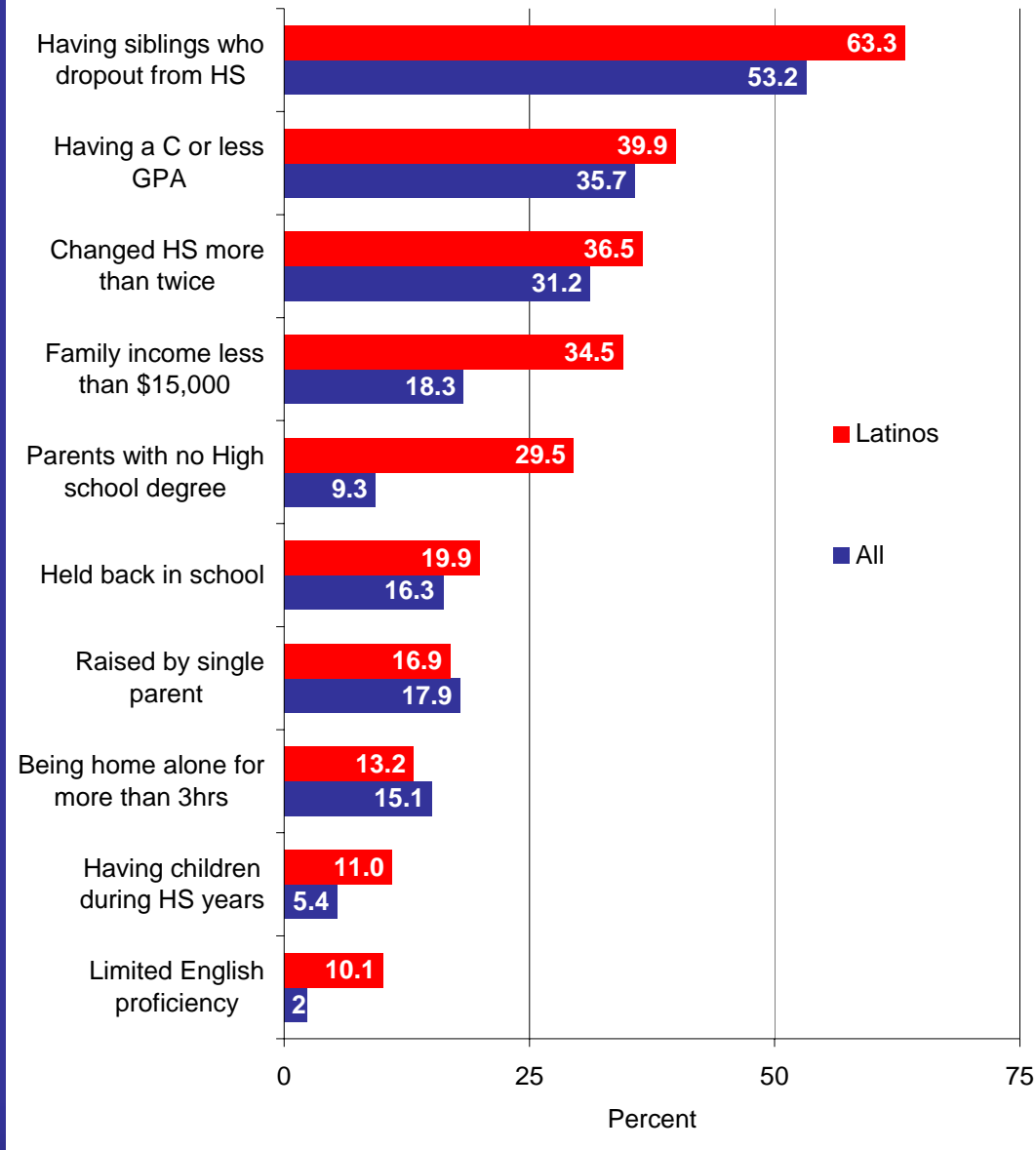
# Improving educational policy and practice through research

Exhibit X. Time to Degree of 1988 NELS 8th grader cohort



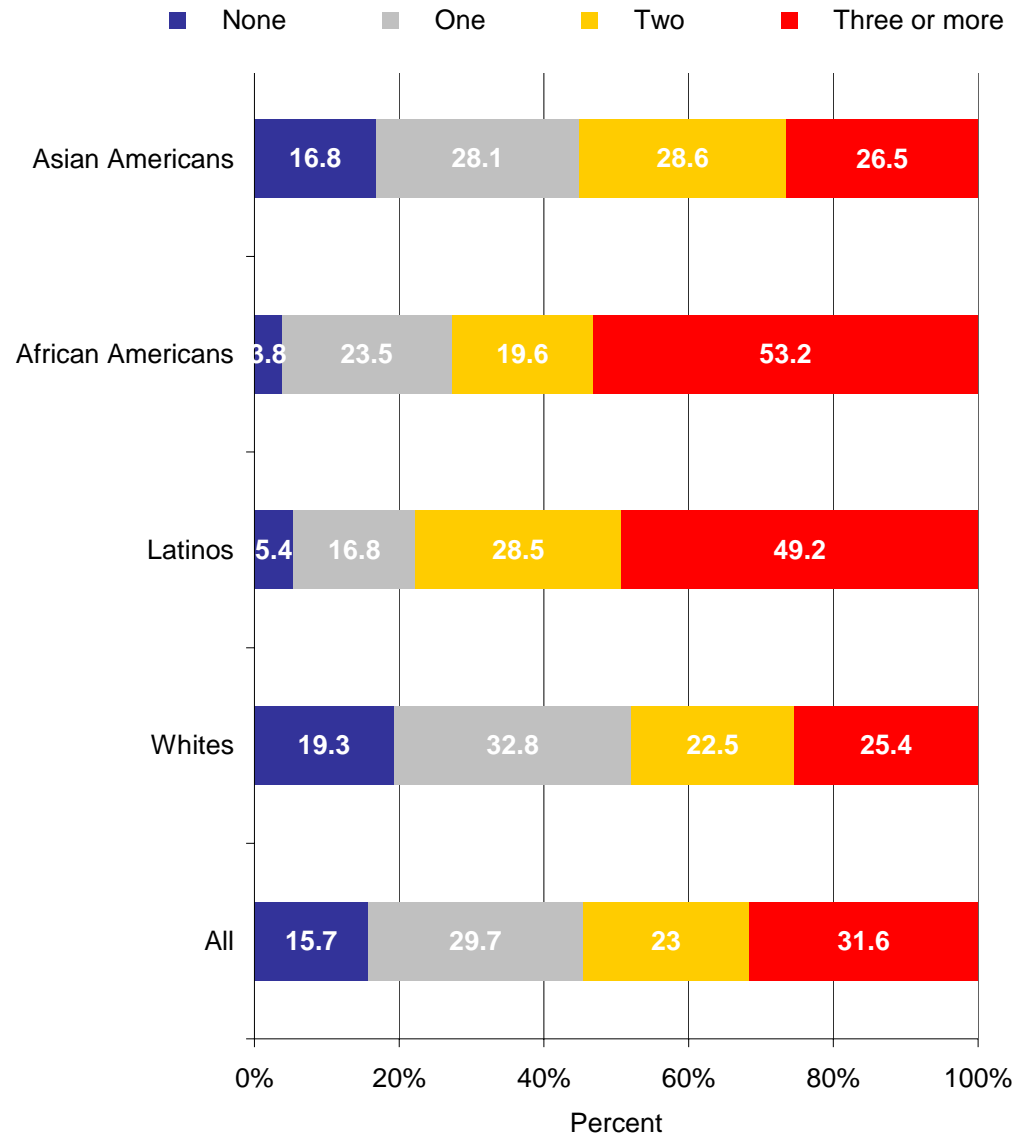
Improving educational policy and practice through research

Exhibit X. At-risk factors for Latino students versus all students of the 1988 NELS 8th grade cohort



# Improving educational policy and practice through research

Exhibit X. Number of risk factors for 1988 NELS 8th grade cohort



1000 8<sup>th</sup> graders

Latino

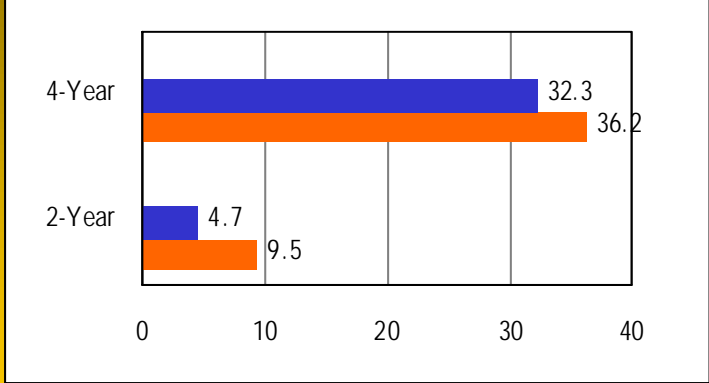
White

### College Qualifications

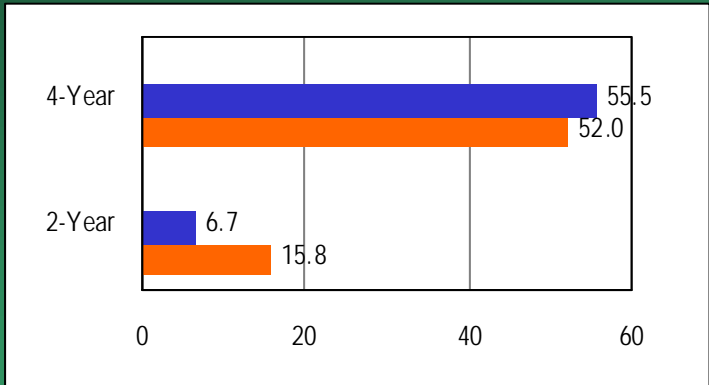
### First PSE attended

### Probability of Securing 4-Year Degree

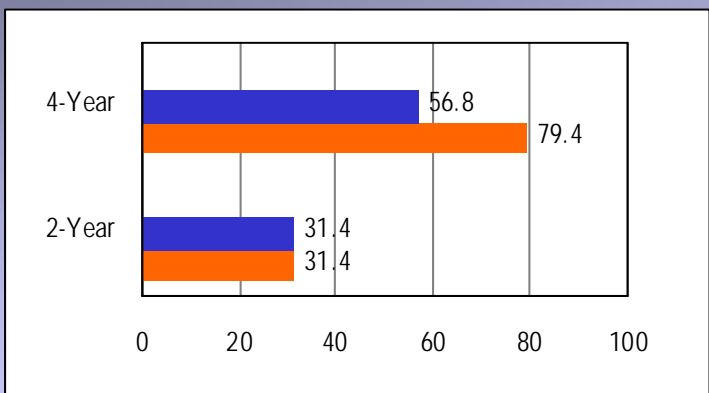
College Qualifications	First PSE attended	
	Latino	White
Not Qualified 557 (55.7)	4-Year: 52 (9.3)	50 (12.8)
Not Qualified 390 (39.0)	2-Year: 245 (44.0)	143 (36.7)
	Other: 20 (3.6)	14 (3.6)
	NONE: 240 (43.1)	183 (46.9)



College Qualifications	First PSE attended	
	Latino	White
Minimally Qualified 166 (16.6)	4-Year: 50 (30.1)	48 (35.3)
Minimally Qualified 136 (13.6)	2-Year: 99 (59.6)	65 (47.8)
	Other: 2 (1.2)	2 (1.5)
	NONE: 15 (9.0)	21 (15.4)



College Qualifications	First PSE attended	
	Latino	White
Qualified 277 (27.7)	4-Year: 172 (62.1)	346 (73.0)
Qualified 474 (47.4)	2-Year: 90 (32.5)	110 (23.2)
	Other: 6 (2.2)	1 (0.2)
	NONE: 9 (3.2)	17 (3.6)



NOTE: Numbers in parentheses indicate percentage of larger or parent group.  
 Source: US Department of Education. National Center for Education Statistics. National Educational Longitudinal Study of 1988 (NELS: 88/2000, 2003-402).

# Conclusion

Latino students were more likely to:

- have been held back in school
- have changed HS more than twice
- earn a C or less in high school
- take lower forms of mathematics in high school
- leave high school before graduation
- earn a GED

# Conclusion

Latino students were more likely to:

- be from a low-income family
- have a sibling who dropped out of school
- be limited in their English proficiency
- have a parent who did not graduate from high school
- have children during high school
- have a parent without any postsecondary experience

# Conclusion

## Less likely to:

- aspire to postsecondary education and to a Bachelor's or advanced degree
- enroll in postsecondary education
- be academically qualified for postsecondary education
- enroll at a selective postsecondary institution
- maintain continuous enrolment through to degree
- complete a postsecondary degree
- earn a degree within four years

## More likely to:

- enroll in a two-year rather than a four-year institution
- delay entry into postsecondary education and delay for longer periods
- attend part-time
- attend more than one postsecondary institution
- enroll at a publicly-funded postsecondary institution
- attend lower-cost institutions

[www.educationalpolicy.org](http://www.educationalpolicy.org)